



**ELECTRONIC COPY**

LG785608234  
Report verification at [igi.org](http://igi.org)



March 25, 2026  
IGI Report Number **LG785608234**  
Description **LABORATORY GROWN DIAMOND**  
Shape and Cutting Style **CUSHION MODIFIED BRILLIANT**  
Measurements **9.90 X 7.57 X 5.12 MM**  
**GRADING RESULTS**  
Carat Weight **3.06 CARATS**  
Color Grade **E**  
Clarity Grade **VVS 2**

**LABORATORY GROWN DIAMOND REPORT**

March 25, 2026  
IGI Report Number **LG785608234**  
Description **LABORATORY GROWN DIAMOND**  
Shape and Cutting Style **CUSHION MODIFIED BRILLIANT**  
Measurements **9.90 X 7.57 X 5.12 MM**

**GRADING RESULTS**

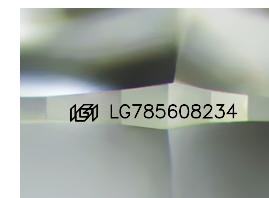
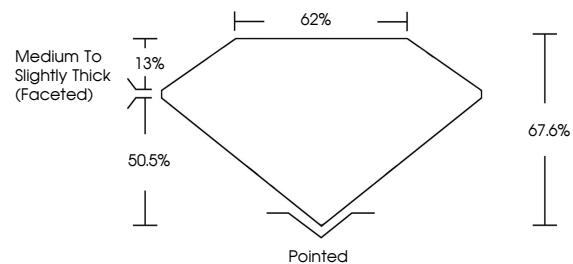
Carat Weight **3.06 CARATS**  
Color Grade **E**  
Clarity Grade **VVS 2**

**ADDITIONAL GRADING INFORMATION**

Polish **EXCELLENT**  
Symmetry **EXCELLENT**  
Fluorescence **NONE**  
Inscription(s) **LG785608234**

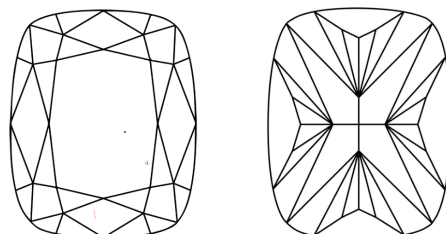
Comments: This Laboratory Grown Diamond was created by Chemical Vapor Deposition (CVD) growth process.  
Type IIa

**PROPORTIONS**



Sample Image Used

**CLARITY CHARACTERISTICS**



**KEY TO SYMBOLS**

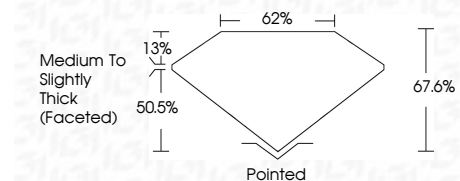
Red symbols indicate internal characteristics.  
Green symbols indicate external characteristics.

**COLOR**

D E F G H I J Faint Very Light Light

**CLARITY**

FL	IF	VVS <sup>1-2</sup>	VS <sup>1-2</sup>	SI <sup>1-2</sup>	I <sup>1-3</sup>
Flawless	Internally Flawless	Very Very Slightly Included	Very Slightly Included	Slightly Included	Included



**ADDITIONAL GRADING INFORMATION**

Polish **EXCELLENT**  
Symmetry **EXCELLENT**  
Fluorescence **NONE**  
Inscription(s) **LG785608234**  
Comments: This Laboratory Grown Diamond was created by Chemical Vapor Deposition (CVD) growth process.  
Type IIa



March 25, 2026  
IGI Report No **LG785608234**  
**CUSHION MODIFIED BRILLIANT**  
3.06 CARATS **E**  
Carat Weight **3.06**  
Color Grade **E**  
Clarity Grade **VVS 2**  
Depth **67.6%**  
Table **62%**  
Girdle **Medium to Slightly Thick (Faceted)**  
Culet **Pointed**  
Polish **EXCELLENT**  
Symmetry **EXCELLENT**  
Fluorescence **NONE**  
Inscription(s) **LG785608234**

Comments: This Laboratory Grown Diamond was created by Chemical Vapor Deposition (CVD) growth process.  
Type IIa