



ELECTRONIC COPY

LG785604732
Report verification at igi.org



March 26, 2026
IGI Report Number LG785604732
Description LABORATORY GROWN DIAMOND
Shape and Cutting Style RECTANGULAR CUSHION MIXED CUT
Measurements 10.65 X 5.50 X 3.73 MM
GRADING RESULTS
Carat Weight 2.01 CARATS
Color Grade F
Clarity Grade VVS 2

LABORATORY GROWN DIAMOND REPORT

March 26, 2026
IGI Report Number LG785604732
Description LABORATORY GROWN DIAMOND
Shape and Cutting Style RECTANGULAR CUSHION MIXED CUT
Measurements 10.65 X 5.50 X 3.73 MM

GRADING RESULTS

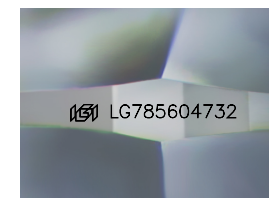
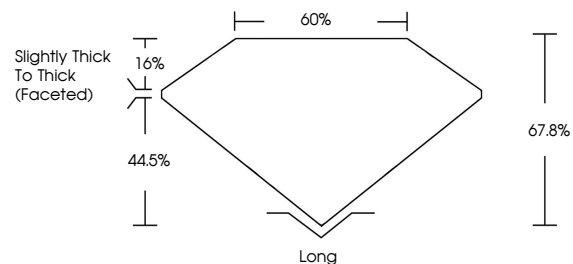
Carat Weight 2.01 CARATS
Color Grade F
Clarity Grade VVS 2

ADDITIONAL GRADING INFORMATION

Polish EXCELLENT
Symmetry EXCELLENT
Fluorescence NONE
Inscription(s) LG785604732

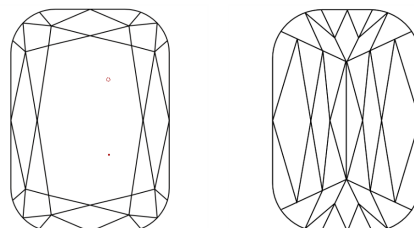
Comments: This Laboratory Grown Diamond was created by Chemical Vapor Deposition (CVD) growth process. Type IIa

PROPORTIONS



Sample Image Used

CLARITY CHARACTERISTICS



KEY TO SYMBOLS

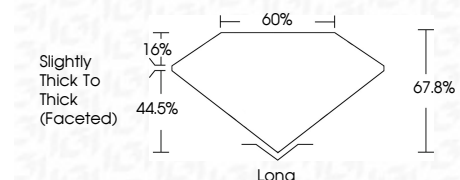
Red symbols indicate internal characteristics.
Green symbols indicate external characteristics.

COLOR

D E F G H I J Faint Very Light Light

CLARITY

FL IF VVS 1-2 VS 1-2 SI 1-2 I 1-3
Flawless Internally Flawless Very Very Slightly Included Very Slightly Included Slightly Included Included



ADDITIONAL GRADING INFORMATION

Polish EXCELLENT
Symmetry EXCELLENT
Fluorescence NONE
Inscription(s) LG785604732
Comments: This Laboratory Grown Diamond was created by Chemical Vapor Deposition (CVD) growth process. Type IIa



March 26, 2026
IGI Report No LG785604732
RECTANGULAR CUSHION MIXED CUT
2.01 CARATS F
Carat Weight 2.01 CARATS
Color Grade F
Clarity Grade VVS 2
Depth 67.0%
Table 44.5%
Girdle Slightly Thick To Thick (Faceted)
Culet Long
Polish EXCELLENT
Symmetry EXCELLENT
Fluorescence NONE
Inscription(s) LG785604732
Comments: This Laboratory Grown Diamond was created by Chemical Vapor Deposition (CVD) growth process. Type IIa