



ELECTRONIC COPY

LG785604671
Report verification at igi.org



March 26, 2026
IGI Report Number **LG785604671**
Description **LABORATORY GROWN DIAMOND**
Shape and Cutting Style **HEXAGONAL MIXED CUT**
Measurements **10.36 X 9.02 X 5.28 MM**
GRADING RESULTS
Carat Weight **3.54 CARATS**
Color Grade **FANCY INTENSE YELLOW**
Clarity Grade **VVS 2**

March 26, 2026
IGI Report Number **LG785604671**
Description **LABORATORY GROWN DIAMOND**
Shape and Cutting Style **HEXAGONAL MIXED CUT**
Measurements **10.36 X 9.02 X 5.28 MM**

GRADING RESULTS

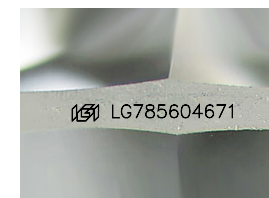
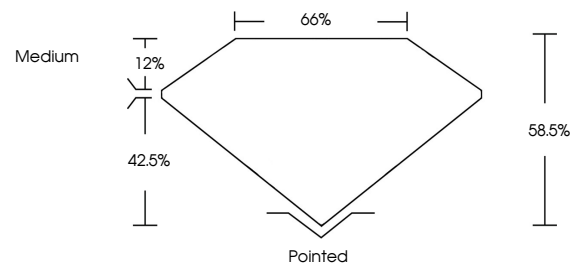
Carat Weight **3.54 CARATS**
Color Grade **FANCY INTENSE YELLOW**
Clarity Grade **VVS 2**

ADDITIONAL GRADING INFORMATION

Polish **EXCELLENT**
Symmetry **EXCELLENT**
Fluorescence **NONE**
Inscription(s) **IGI LG785604671**

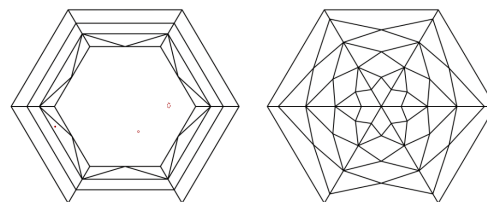
Comments: This Laboratory Grown Diamond was created by Chemical Vapor Deposition (CVD) growth process.

PROPORTIONS



Sample Image Used

CLARITY CHARACTERISTICS



KEY TO SYMBOLS

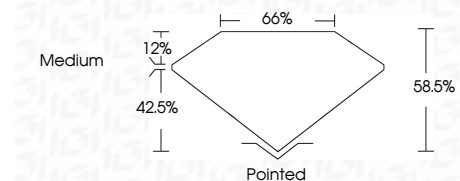
Red symbols indicate internal characteristics.
Green symbols indicate external characteristics.

COLOR

D E F G H I J Faint Very Light Light

CLARITY

FL	IF	VVS ¹⁻²	VS ¹⁻²	SI ¹⁻²	I ¹⁻³
Flawless	Internally Flawless	Very Very Slightly Included	Very Slightly Included	Slightly Included	Included



ADDITIONAL GRADING INFORMATION

Polish **EXCELLENT**
Symmetry **EXCELLENT**
Fluorescence **NONE**
Inscription(s) **IGI LG785604671**
Comments: This Laboratory Grown Diamond was created by Chemical Vapor Deposition (CVD) growth process.



March 26, 2026
IGI Report No **LG785604671**
HEXAGONAL MIXED CUT
10.36 X 9.02 X 5.28 MM
Carat Weight **3.54 CARATS**
Color Grade **FANCY INTENSE YELLOW**
Clarity Grade **VVS 2**
Depth **58.5%**
Table **66%**
Girdle **Medium**
Culet **Pointed**
Polish **EXCELLENT**
Symmetry **EXCELLENT**
Fluorescence **NONE**
Inscription(s) **IGI LG785604671**
Comments: This Laboratory Grown Diamond was created by Chemical Vapor Deposition (CVD) growth process.