



ELECTRONIC COPY

LABORATORY GROWN DIAMOND REPORT

March 27, 2026 IGI Report Number LG785603064 Description LABORATORY GROWN DIAMOND Shape and Cutting Style CUT CORNERED RECTANGULAR MODIFIED BRILLIANT Measurements 11.54 X 8.54 X 5.70 MM

GRADING RESULTS

Carat Weight 4.94 CARATS Color Grade E Clarity Grade VVS 2

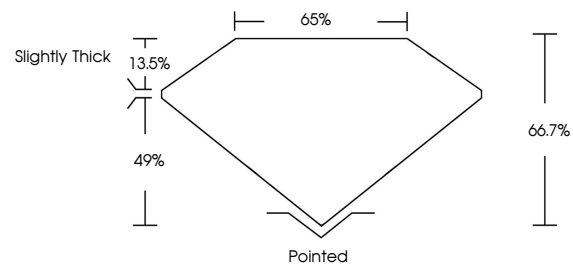
ADDITIONAL GRADING INFORMATION

Polish EXCELLENT Symmetry EXCELLENT Fluorescence NONE

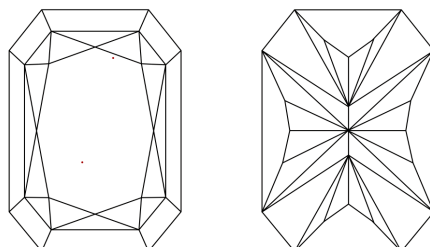
Inscription(s) IGI LG785603064

Comments: This Laboratory Grown Diamond was created by Chemical Vapor Deposition (CVD) growth process. Type IIa

PROPORTIONS

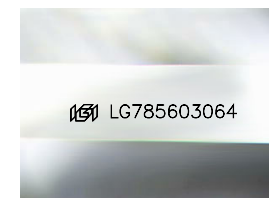


CLARITY CHARACTERISTICS



KEY TO SYMBOLS

Red symbols indicate internal characteristics. Green symbols indicate external characteristics.



Sample Image Used

COLOR

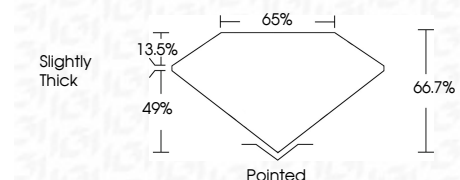
D E F G H I J Faint Very Light Light

CLARITY

FL IF VVS 1-2 VS 1-2 SI 1-2 I 1-3 Flawless Internally Flawless Very Very Slightly Included Very Slightly Included Slightly Included Included



March 27, 2026 IGI Report Number LG785603064 Description LABORATORY GROWN DIAMOND Shape and Cutting Style CUT CORNERED RECTANGULAR MODIFIED BRILLIANT Measurements 11.54 X 8.54 X 5.70 MM GRADING RESULTS Carat Weight 4.94 CARATS Color Grade E Clarity Grade VVS 2



ADDITIONAL GRADING INFORMATION

Polish EXCELLENT Symmetry EXCELLENT Fluorescence NONE Inscription(s) IGI LG785603064 Comments: This Laboratory Grown Diamond was created by Chemical Vapor Deposition (CVD) growth process. Type IIa



March 27, 2026 IGI Report No LG785603064 CUT CORNERED RECT. MODIFIED BRILLIANT 4.94 CARATS E VVS 2 66.7% 65% Slightly Thick Pointed EXCELLENT EXCELLENT NONE NONE IGI LG785603064 Comments: This Laboratory Grown Diamond was created by Chemical Vapor Deposition (CVD) growth process. Type IIa