



March 25, 2026

IGI Report Number LG785602257
HEXAGONAL MODIFIED STEP CUT
LABORATORY GROWN DIAMOND
7.01 X 4.11 X 2.33 MM

0.50 CARAT
E
VVS 1
EXCELLENT
VERY GOOD
NONE
IGI LG785602257

Comments: This Laboratory Grown Diamond was created by Chemical Vapor Deposition (CVD) growth process. Type IIa

LABORATORY GROWN DIAMOND REPORT

March 25, 2026

IGI Report Number

LG785602257

Description

LABORATORY GROWN DIAMOND

Shape and Cutting Style

HEXAGONAL MODIFIED STEP CUT

Measurements

7.01 X 4.11 X 2.33 MM

GRADING RESULTS

Carat Weight

0.50 CARAT

Color Grade

E

Clarity Grade

VVS 1

ADDITIONAL GRADING INFORMATION

Polish

EXCELLENT

Symmetry

VERY GOOD

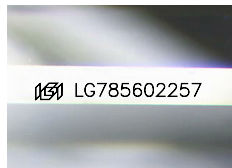
Fluorescence

NONE

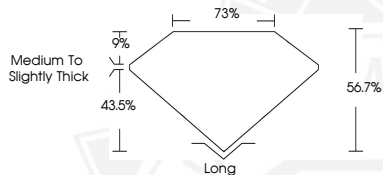
Inscription(s)

IGI LG785602257

Comments: This Laboratory Grown Diamond was created by Chemical Vapor Deposition (CVD) growth process. Type IIa



Sample Image Used



March 25, 2026

IGI Report Number LG785602257
HEXAGONAL MODIFIED STEP CUT
LABORATORY GROWN DIAMOND
7.01 X 4.11 X 2.33 MM

0.50 CARAT
E
VVS 1
EXCELLENT
VERY GOOD
NONE
IGI LG785602257

Comments: This Laboratory Grown Diamond was created by Chemical Vapor Deposition (CVD) growth process. Type IIa



THIS DOCUMENT WAS PRODUCED WITH THE FOLLOWING SECURITY MEASURES: SPECIAL DOCUMENT PAPER, INK SCREENS, WATERMARK, BACKGROUND DESIGNS, HOLOGRAM AND OTHER SECURITY FEATURES NOT LISTED AND DO EXCEED DOCUMENT SECURITY INDUSTRY GUIDELINES.