



**ELECTRONIC COPY**

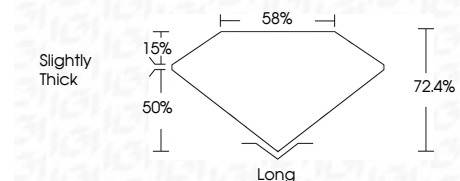
LG784698993  
Report verification at igi.org



March 30, 2026  
IGI Report Number **LG784698993**  
Description **LABORATORY GROWN DIAMOND**  
Shape and Cutting Style **TRAPEZE STEP CUT**  
Measurements **9.17 X 5.36 X 3.88 MM**

**GRADING RESULTS**

Carat Weight **1.56 CARAT**  
Color Grade **E**  
Clarity Grade **VVS 2**



**ADDITIONAL GRADING INFORMATION**

Polish **EXCELLENT**  
Symmetry **EXCELLENT**  
Fluorescence **NONE**  
Inscription(s) **IGI LG784698993**  
Comments: This Laboratory Grown Diamond was created by Chemical Vapor Deposition (CVD) growth process. Type IIa



March 30, 2026  
IGI Report No LG784698993  
TRAPEZE STEP CUT  
9.17 X 5.36 X 3.88 MM  
1.56 CARAT  
E  
VVS 2  
72.4%  
58%  
Slightly Thick  
Long  
EXCELLENT  
EXCELLENT  
NONE  
IGI LG784698993  
Comments: This Laboratory Grown Diamond was created by Chemical Vapor Deposition (CVD) growth process. Type IIa

**LABORATORY GROWN DIAMOND REPORT**

March 30, 2026  
IGI Report Number **LG784698993**  
Description **LABORATORY GROWN DIAMOND**  
Shape and Cutting Style **TRAPEZE STEP CUT**  
Measurements **9.17 X 5.36 X 3.88 MM**

**GRADING RESULTS**

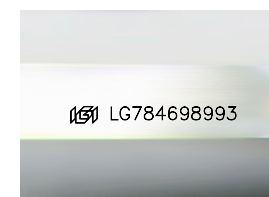
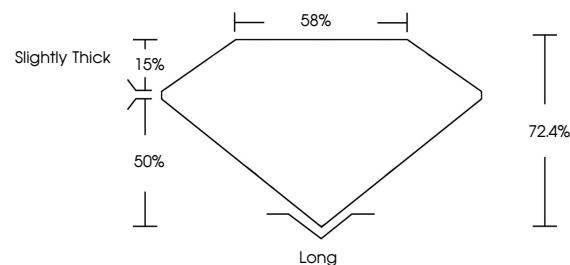
Carat Weight **1.56 CARAT**  
Color Grade **E**  
Clarity Grade **VVS 2**

**ADDITIONAL GRADING INFORMATION**

Polish **EXCELLENT**  
Symmetry **EXCELLENT**  
Fluorescence **NONE**  
Inscription(s) **IGI LG784698993**

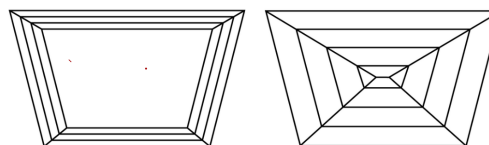
Comments: This Laboratory Grown Diamond was created by Chemical Vapor Deposition (CVD) growth process. Type IIa

**PROPORTIONS**



Sample Image Used

**CLARITY CHARACTERISTICS**



**KEY TO SYMBOLS**

Red symbols indicate internal characteristics.  
Green symbols indicate external characteristics.

**COLOR**

D E F G H I J Faint Very Light Light

**CLARITY**

FL	IF	VVS <sup>1-2</sup>	VS <sup>1-2</sup>	SI <sup>1-2</sup>	I <sup>1-3</sup>
Flawless	Internally Flawless	Very Very Slightly Included	Very Slightly Included	Slightly Included	Included

