



**ELECTRONIC COPY**

LG784698761  
Report verification at igi.org



March 27, 2026  
IGI Report Number **LG784698761**  
Description **LABORATORY GROWN DIAMOND**  
Shape and Cutting Style **EMERALD CUT**  
Measurements **12.13 X 8.55 X 5.62 MM**  
**GRADING RESULTS**  
Carat Weight **6.09 CARATS**  
Color Grade **D**  
Clarity Grade **VVS 1**

March 27, 2026  
IGI Report Number **LG784698761**  
Description **LABORATORY GROWN DIAMOND**  
Shape and Cutting Style **EMERALD CUT**  
Measurements **12.13 X 8.55 X 5.62 MM**

**GRADING RESULTS**

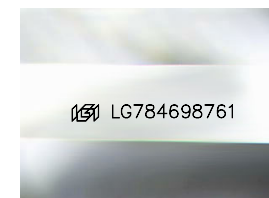
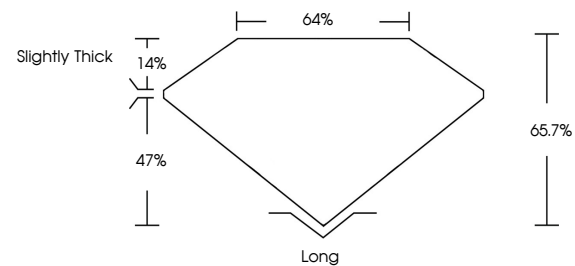
Carat Weight **6.09 CARATS**  
Color Grade **D**  
Clarity Grade **VVS 1**

**ADDITIONAL GRADING INFORMATION**

Polish **EXCELLENT**  
Symmetry **EXCELLENT**  
Fluorescence **NONE**  
Inscription(s) **IGI LG784698761**

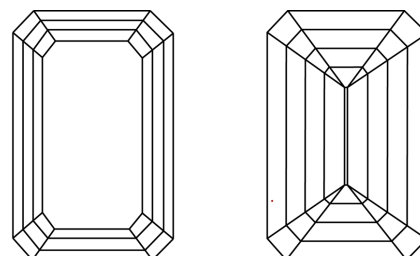
Comments: This Laboratory Grown Diamond was created by Chemical Vapor Deposition (CVD) growth process. Type IIa

**PROPORTIONS**



Sample Image Used

**CLARITY CHARACTERISTICS**



**KEY TO SYMBOLS**

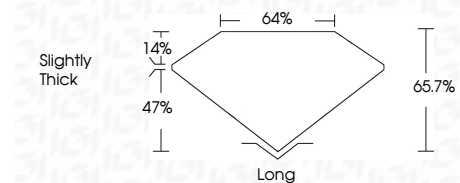
Red symbols indicate internal characteristics.  
Green symbols indicate external characteristics.

**COLOR**

D E F G H I J Faint Very Light Light

**CLARITY**

FL	IF	VVS <sup>1-2</sup>	VS <sup>1-2</sup>	SI <sup>1-2</sup>	I <sup>1-3</sup>
Flawless	Internally Flawless	Very Very Slightly Included	Very Slightly Included	Slightly Included	Included



**ADDITIONAL GRADING INFORMATION**

Polish **EXCELLENT**  
Symmetry **EXCELLENT**  
Fluorescence **NONE**  
Inscription(s) **IGI LG784698761**  
Comments: This Laboratory Grown Diamond was created by Chemical Vapor Deposition (CVD) growth process. Type IIa



March 27, 2026  
IGI Report No **LG784698761**  
**EMERALD CUT**  
12.13 X 8.55 X 5.62 MM  
6.09 CARATS  
D  
VVS 1  
65.7%  
47%  
14%  
Slightly Thick  
Long  
EXCELLENT  
EXCELLENT  
NONE  
IGI LG784698761  
Comments: This Laboratory Grown Diamond was created by Chemical Vapor Deposition (CVD) growth process. Type IIa