



ELECTRONIC COPY

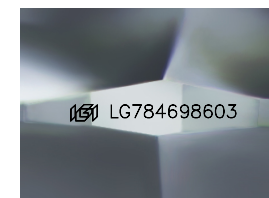
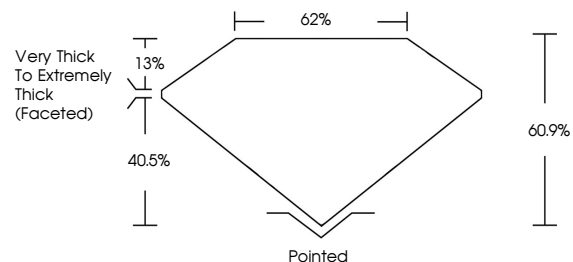
LG784698603
Report verification at igi.org



April 4, 2026
IGI Report Number **LG784698603**
Description **LABORATORY GROWN DIAMOND**
Shape and Cutting Style **CUSHION MODIFIED BRILLIANT**
Measurements **12.59 X 11.87 X 7.23 MM**
GRADING RESULTS
Carat Weight **10.10 CARATS**
Color Grade **FANCY VIVID YELLOW**
Clarity Grade **VS 2**

April 4, 2026
IGI Report Number **LG784698603**
Description **LABORATORY GROWN DIAMOND**
Shape and Cutting Style **CUSHION MODIFIED BRILLIANT**
Measurements **12.59 X 11.87 X 7.23 MM**

PROPORTIONS

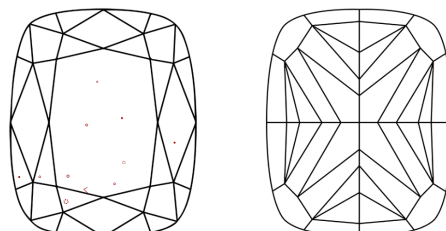


Sample Image Used

GRADING RESULTS

Carat Weight **10.10 CARATS**
Color Grade **FANCY VIVID YELLOW**
Clarity Grade **VS 2**

CLARITY CHARACTERISTICS



KEY TO SYMBOLS

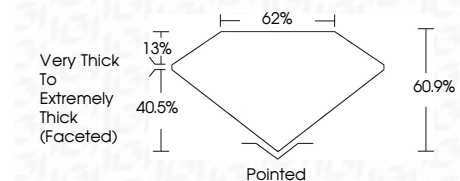
Red symbols indicate internal characteristics.
Green symbols indicate external characteristics.

COLOR

D E F G H I J Faint Very Light Light

CLARITY

FL	IF	VS ¹⁻²	VS ¹⁻²	SI ¹⁻²	I ¹⁻³
Flawless	Internally Flawless	Very Very Slightly Included	Very Slightly Included	Slightly Included	Included



ADDITIONAL GRADING INFORMATION

Polish **EXCELLENT**
Symmetry **EXCELLENT**
Fluorescence **NONE**
Inscription(s) **IGI LG784698603**
Comments: This Laboratory Grown Diamond was created by Chemical Vapor Deposition (CVD) growth process.

ADDITIONAL GRADING INFORMATION

Polish **EXCELLENT**
Symmetry **EXCELLENT**
Fluorescence **NONE**
Inscription(s) **IGI LG784698603**

Comments: This Laboratory Grown Diamond was created by Chemical Vapor Deposition (CVD) growth process.



April 4, 2026
IGI Report No **LG784698603**
CUSHION MODIFIED BRILLIANT
10.10 CARATS
Carat Weight **10.10 CARATS**
Color Grade **FANCY VIVID YELLOW**
Clarity Grade **VS 2**
Depth **60.9%**
Table **62%**
Girdle **Very Thick to Extremely Thick (Faceted)**
Culet **Pointed**
Polish **EXCELLENT**
Symmetry **EXCELLENT**
Fluorescence **NONE**
Inscription(s) **IGI LG784698603**
Comments: This Laboratory Grown Diamond was created by Chemical Vapor Deposition (CVD) growth process.