



**ELECTRONIC COPY**

LG784695771  
Report verification at igi.org



March 26, 2026  
IGI Report Number **LG784695771**  
Description **LABORATORY GROWN DIAMOND**  
Shape and Cutting Style **CUSHION MIXED CUT**  
Measurements **12.07 X 9.09 X 6.12 MM**  
**GRADING RESULTS**  
Carat Weight **6.07 CARATS**  
Color Grade **FANCY VIVID YELLOW**  
Clarity Grade **VS 2**

March 26, 2026  
IGI Report Number **LG784695771**  
Description **LABORATORY GROWN DIAMOND**  
Shape and Cutting Style **CUSHION MIXED CUT**  
Measurements **12.07 X 9.09 X 6.12 MM**

**GRADING RESULTS**

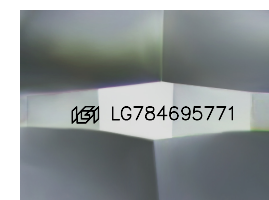
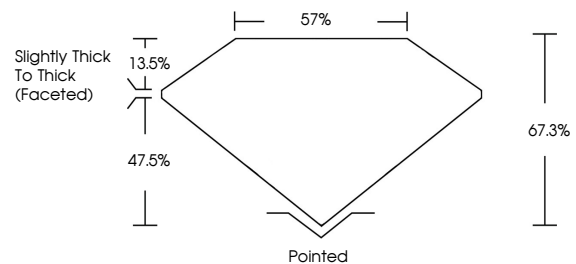
Carat Weight **6.07 CARATS**  
Color Grade **FANCY VIVID YELLOW**  
Clarity Grade **VS 2**

**ADDITIONAL GRADING INFORMATION**

Polish **EXCELLENT**  
Symmetry **EXCELLENT**  
Fluorescence **NONE**  
Inscription(s) **IGI LG784695771**

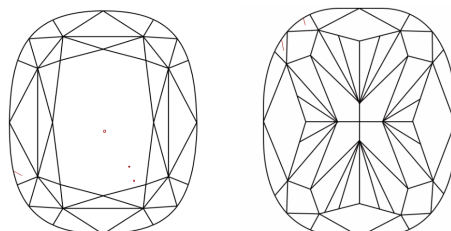
Comments: This Laboratory Grown Diamond was created by Chemical Vapor Deposition (CVD) growth process.

**PROPORTIONS**



Sample Image Used

**CLARITY CHARACTERISTICS**



**KEY TO SYMBOLS**

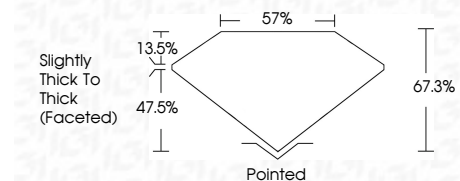
Red symbols indicate internal characteristics.  
Green symbols indicate external characteristics.

**COLOR**

D E F G H I J Faint Very Light Light

**CLARITY**

FL	IF	VS <sup>1-2</sup>	VS <sup>1-2</sup>	SI <sup>1-2</sup>	I <sup>1-3</sup>
Flawless	Internally Flawless	Very Very Slightly Included	Very Slightly Included	Slightly Included	Included



**ADDITIONAL GRADING INFORMATION**

Polish **EXCELLENT**  
Symmetry **EXCELLENT**  
Fluorescence **NONE**  
Inscription(s) **IGI LG784695771**  
Comments: This Laboratory Grown Diamond was created by Chemical Vapor Deposition (CVD) growth process.



**IGI**



March 26, 2026  
IGI Report No LG784695771  
**CUSHION MIXED CUT**  
12.07 X 9.09 X 6.12 MM  
6.07 CARATS  
FANCY VIVID YELLOW  
VS 2  
67.3%  
47.5%  
Slightly Thick To Thick (Faceted)  
Pointed  
EXCELLENT  
EXCELLENT  
NONE  
IGI LG784695771  
Comments: This Laboratory Grown Diamond was created by Chemical Vapor Deposition (CVD) growth process.