



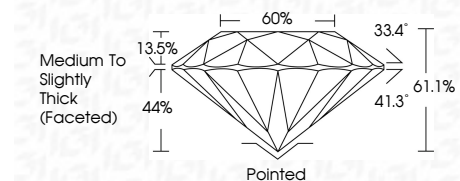
**ELECTRONIC COPY**

LG784692962  
Report verification at igi.org



March 22, 2026  
IGI Report Number **LG784692962**  
Description **LABORATORY GROWN DIAMOND**  
Shape and Cutting Style **ROUND BRILLIANT**  
Measurements **7.17 - 7.22 X 4.40 MM**

**GRADING RESULTS**  
Carat Weight **1.40 CARAT**  
Color Grade **E**  
Clarity Grade **VS 2**  
Cut Grade **IDEAL**



**ADDITIONAL GRADING INFORMATION**  
Polish **EXCELLENT**  
Symmetry **EXCELLENT**  
Fluorescence **NONE**  
Inscription(s) **IGI LG784692962**  
Comments: This Laboratory Grown Diamond was created by Chemical Vapor Deposition (CVD) growth process. Type IIa



March 22, 2026  
IGI Report No LG784692962  
**ROUND BRILLIANT**  
1.40 CARAT  
E  
7.17 - 7.22 X 4.40 MM  
Color Grade  
VS 2  
Clarity Grade  
IDEAL  
Depth  
61.1%  
Table  
60%  
Medium To Slightly Thick (Faceted)  
Culet  
Pointed  
Polish  
EXCELLENT  
Symmetry  
EXCELLENT  
Fluorescence  
NONE  
Inscription(s)  
IGI LG784692962  
Comments: This Laboratory Grown Diamond was created by Chemical Vapor Deposition (CVD) growth process. Type IIa

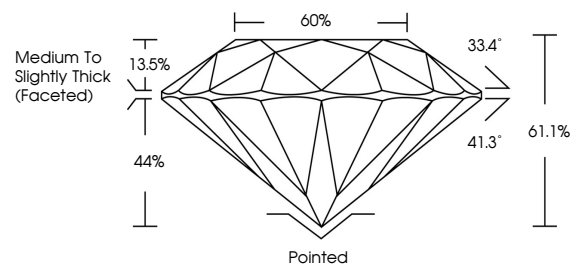
March 22, 2026  
IGI Report Number **LG784692962**  
Description **LABORATORY GROWN DIAMOND**  
Shape and Cutting Style **ROUND BRILLIANT**  
Measurements **7.17 - 7.22 X 4.40 MM**

**GRADING RESULTS**  
Carat Weight **1.40 CARAT**  
Color Grade **E**  
Clarity Grade **VS 2**  
Cut Grade **IDEAL**

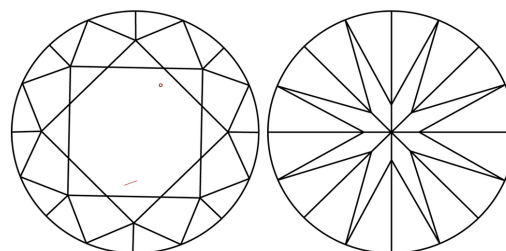
**ADDITIONAL GRADING INFORMATION**  
Polish **EXCELLENT**  
Symmetry **EXCELLENT**  
Fluorescence **NONE**  
Inscription(s) **IGI LG784692962**

Comments: This Laboratory Grown Diamond was created by Chemical Vapor Deposition (CVD) growth process. Type IIa

**PROPORTIONS**

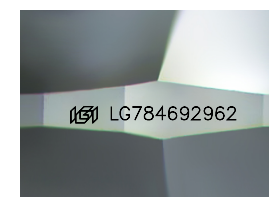


**CLARITY CHARACTERISTICS**



**KEY TO SYMBOLS**

Red symbols indicate internal characteristics.  
Green symbols indicate external characteristics.



Sample Image Used

**COLOR**

D E F G H I J Faint Very Light Light

**CLARITY**

FL	IF	VS <sup>1-2</sup>	VS <sup>1-2</sup>	SI <sup>1-2</sup>	I <sup>1-3</sup>
Flawless	Internally Flawless	Very Very Slightly Included	Very Slightly Included	Slightly Included	Included

