



**ELECTRONIC COPY**

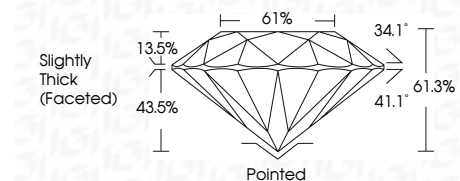
LG784691978  
Report verification at igi.org



March 28, 2026  
IGI Report Number **LG784691978**  
Description **LABORATORY GROWN DIAMOND**  
Shape and Cutting Style **ROUND BRILLIANT**  
Measurements **7.65 - 7.74 X 4.71 MM**

**GRADING RESULTS**

Carat Weight **1.74 CARAT**  
Color Grade **G**  
Clarity Grade **VS 2**  
Cut Grade **EXCELLENT**

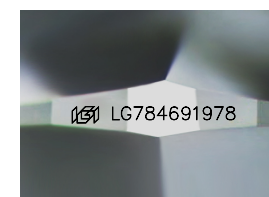


**ADDITIONAL GRADING INFORMATION**

Polish **EXCELLENT**  
Symmetry **EXCELLENT**  
Fluorescence **NONE**  
Inscription(s) **IGI LG784691978**  
Comments: This Laboratory Grown Diamond was created by Chemical Vapor Deposition (CVD) growth process. Type IIa

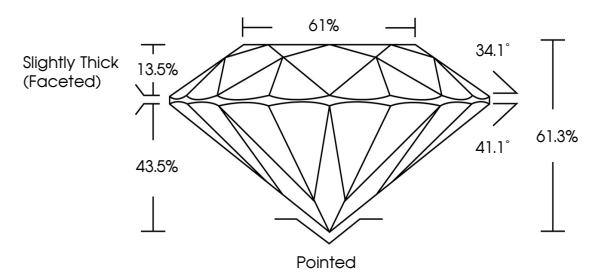


March 28, 2026  
IGI Report No LG784691978  
**ROUND BRILLIANT**  
7.65 - 7.74 X 4.71 MM  
Carat Weight **1.74 CARAT**  
Color Grade **G**  
Clarity Grade **VS 2**  
Depth **EXCELLENT**  
Table **61.5%**  
Girdle **61%**  
Culet **Slightly Thick (Faceted)**  
Polish **EXCELLENT**  
Symmetry **EXCELLENT**  
Fluorescence **NONE**  
Inscription(s) **IGI LG784691978**  
Comments: This Laboratory Grown Diamond was created by Chemical Vapor Deposition (CVD) growth process. Type IIa

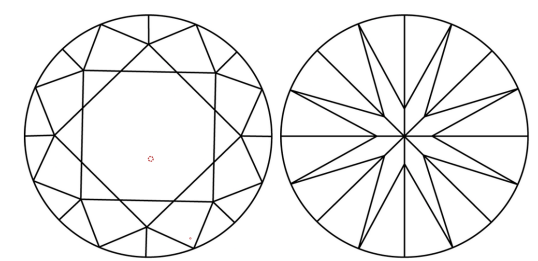


Sample Image Used

**PROPORTIONS**



**CLARITY CHARACTERISTICS**



**KEY TO SYMBOLS**

Red symbols indicate internal characteristics.  
Green symbols indicate external characteristics.

**COLOR**

D E F G H I J Faint Very Light Light

**CLARITY**

FL	IF	VS <sup>1-2</sup>	VS <sup>1-2</sup>	SI <sup>1-2</sup>	I <sup>1-3</sup>
Flawless	Internally Flawless	Very Very Slightly Included	Very Slightly Included	Slightly Included	Included

