



**ELECTRONIC COPY**

LG784691645  
Report verification at igi.org



March 25, 2026

IGI Report Number **LG784691645**

Description **LABORATORY GROWN DIAMOND**

Shape and Cutting Style **EMERALD CUT**

Measurements **8.40 X 5.54 X 3.60 MM**

**GRADING RESULTS**

Carat Weight **1.59 CARAT**

Color Grade **FANCY VIVID BLUE**

Clarity Grade **VVS 2**

**LABORATORY GROWN DIAMOND REPORT**

March 25, 2026

IGI Report Number **LG784691645**

Description **LABORATORY GROWN DIAMOND**

Shape and Cutting Style **EMERALD CUT**

Measurements **8.40 X 5.54 X 3.60 MM**

**GRADING RESULTS**

Carat Weight **1.59 CARAT**

Color Grade **FANCY VIVID BLUE**

Clarity Grade **VVS 2**

**ADDITIONAL GRADING INFORMATION**

Polish **EXCELLENT**

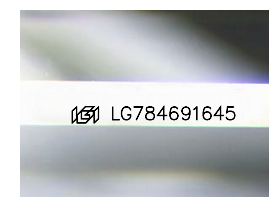
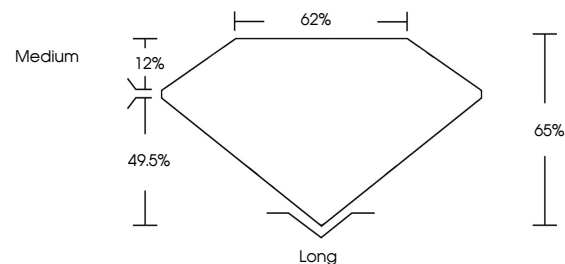
Symmetry **EXCELLENT**

Fluorescence **NONE**

Inscription(s) **IGI LG784691645**

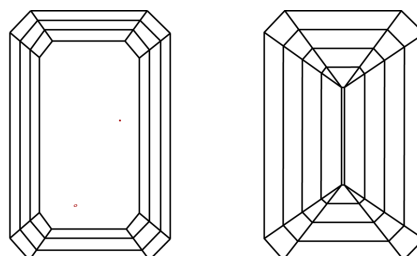
Comments: This Laboratory Grown Diamond was created by Chemical Vapor Deposition (CVD) growth process. Indications of post-growth treatment.

**PROPORTIONS**



Sample Image Used

**CLARITY CHARACTERISTICS**



**KEY TO SYMBOLS**

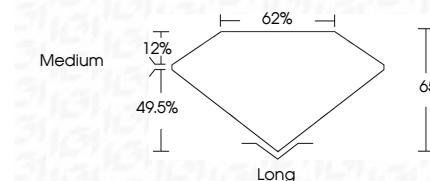
Red symbols indicate internal characteristics.  
Green symbols indicate external characteristics.

**COLOR**

D E F G H I J Faint Very Light Light

**CLARITY**

FL	IF	VVS <sup>1-2</sup>	VS <sup>1-2</sup>	SI <sup>1-2</sup>	I <sup>1-3</sup>
Flawless	Internally Flawless	Very Very Slightly Included	Very Slightly Included	Slightly Included	Included



**ADDITIONAL GRADING INFORMATION**

Polish **EXCELLENT**

Symmetry **EXCELLENT**

Fluorescence **NONE**

Inscription(s) **IGI LG784691645**

Comments: This Laboratory Grown Diamond was created by Chemical Vapor Deposition (CVD) growth process. Indications of post-growth treatment.



**IGI**



March 25, 2026  
IGI Report No LG784691645  
**EMERALD CUT**  
1.59 CARAT  
8.40 X 5.54 X 3.60 MM  
FANCY VIVID BLUE  
VVS 2  
65%  
62%  
Medium  
Long  
EXCELLENT  
EXCELLENT  
NONE  
IGI LG784691645

Comments: This Laboratory Grown Diamond was created by Chemical Vapor Deposition (CVD) growth process. Indications of post-growth treatment.