



ELECTRONIC COPY

LG784689060
Report verification at igi.org



March 25, 2026
IGI Report Number **LG784689060**
Description **LABORATORY GROWN DIAMOND**
Shape and Cutting Style **CUT CORNERED
RECTANGULAR MODIFIED
BRILLIANT**
Measurements **8.45 X 6.01 X 4.30 MM**
GRADING RESULTS
Carat Weight **2.10 CARATS**
Color Grade **FANCY VIVID PINK**
Clarity Grade **VS 1**

March 25, 2026
IGI Report Number **LG784689060**
Description **LABORATORY GROWN DIAMOND**
Shape and Cutting Style **CUT CORNERED RECTANGULAR
MODIFIED BRILLIANT**
Measurements **8.45 X 6.01 X 4.30 MM**

GRADING RESULTS

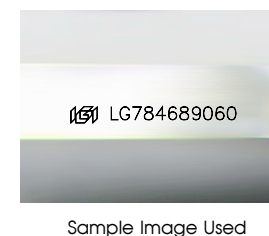
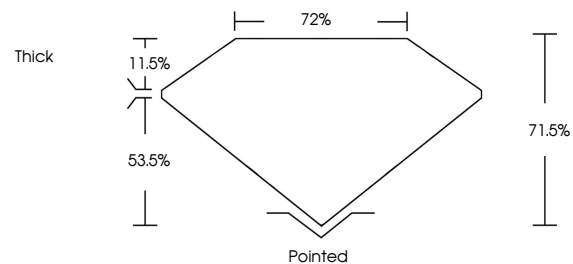
Carat Weight **2.10 CARATS**
Color Grade **FANCY VIVID PINK**
Clarity Grade **VS 1**

ADDITIONAL GRADING INFORMATION

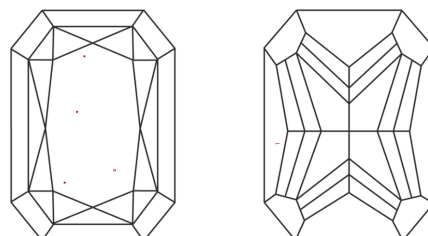
Polish **VERY GOOD**
Symmetry **VERY GOOD**
Fluorescence **SLIGHT**
Inscription(s) **IGI LG784689060**

Comments: This Laboratory Grown Diamond was created by Chemical Vapor Deposition (CVD) growth process. Indications of post-growth treatment.

PROPORTIONS



CLARITY CHARACTERISTICS



KEY TO SYMBOLS

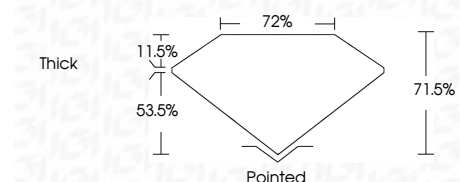
Red symbols indicate internal characteristics.
Green symbols indicate external characteristics.

COLOR

D E F G H I J Faint Very Light Light

CLARITY

FL	IF	VS ¹⁻²	VS ¹⁻²	SI ¹⁻²	I ¹⁻³
Flawless	Internally Flawless	Very Very Slightly Included	Very Slightly Included	Slightly Included	Included



ADDITIONAL GRADING INFORMATION

Polish **VERY GOOD**
Symmetry **VERY GOOD**
Fluorescence **SLIGHT**
Inscription(s) **IGI LG784689060**
Comments: This Laboratory Grown Diamond was created by Chemical Vapor Deposition (CVD) growth process. Indications of post-growth treatment.



March 25, 2026
IGI Report No LG784689060
CUT CORNERED RECT. MODIFIED BRILLIANT
8.45 X 6.01 X 4.30 MM
2.10 CARATS
FANCY VIVID PINK
VS 1
71.6%
72%
Thick
Pointed
Polish VERY GOOD
Symmetry VERY GOOD
Fluorescence SLIGHT
Inscription(s) IGI LG784689060
Comments: This Laboratory Grown Diamond was created by Chemical Vapor Deposition (CVD) growth process. Indications of post-growth treatment.