



**ELECTRONIC COPY**

LG784689057  
Report verification at igi.org



March 25, 2026  
IGI Report Number **LG784689057**  
Description **LABORATORY GROWN DIAMOND**  
Shape and Cutting Style **CUT CORNERED  
RECTANGULAR MODIFIED  
BRILLIANT**  
Measurements **8.46 X 6.05 X 4.40 MM**  
**GRADING RESULTS**  
Carat Weight **2.05 CARATS**  
Color Grade **FANCY VIVID PINK**  
Clarity Grade **VS 1**

March 25, 2026  
IGI Report Number **LG784689057**  
Description **LABORATORY GROWN DIAMOND**  
Shape and Cutting Style **CUT CORNERED RECTANGULAR  
MODIFIED BRILLIANT**  
Measurements **8.46 X 6.05 X 4.40 MM**

**GRADING RESULTS**

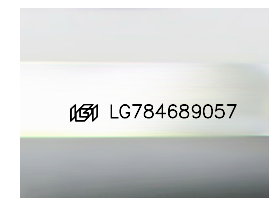
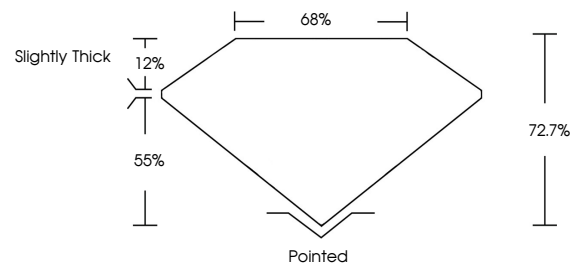
Carat Weight **2.05 CARATS**  
Color Grade **FANCY VIVID PINK**  
Clarity Grade **VS 1**

**ADDITIONAL GRADING INFORMATION**

Polish **VERY GOOD**  
Symmetry **VERY GOOD**  
Fluorescence **SLIGHT**  
Inscription(s) **IGI LG784689057**

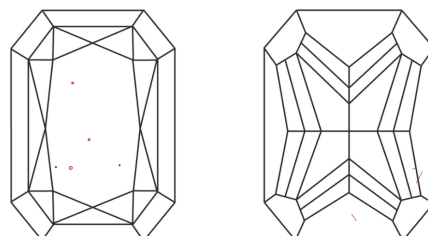
Comments: This Laboratory Grown Diamond was created by Chemical Vapor Deposition (CVD) growth process. Indications of post-growth treatment.

**PROPORTIONS**



Sample Image Used

**CLARITY CHARACTERISTICS**



**KEY TO SYMBOLS**

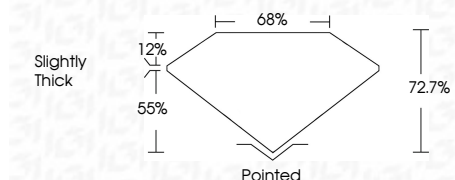
Red symbols indicate internal characteristics.  
Green symbols indicate external characteristics.

**COLOR**

D E F G H I J Faint Very Light Light

**CLARITY**

| FL       | IF                  | VS <sup>1-2</sup>           | VS <sup>1-2</sup>      | SI <sup>1-2</sup> | I <sup>1-3</sup> |
|----------|---------------------|-----------------------------|------------------------|-------------------|------------------|
| Flawless | Internally Flawless | Very Very Slightly Included | Very Slightly Included | Slightly Included | Included         |



**ADDITIONAL GRADING INFORMATION**

Polish **VERY GOOD**  
Symmetry **VERY GOOD**  
Fluorescence **SLIGHT**  
Inscription(s) **IGI LG784689057**  
Comments: This Laboratory Grown Diamond was created by Chemical Vapor Deposition (CVD) growth process. Indications of post-growth treatment.



**IGI**



March 25, 2026  
IGI Report No **LG784689057**  
**CUT CORNERED RECT. MODIFIED BRILLIANT**  
**8.46 X 6.05 X 4.40 MM**  
Carat Weight **2.05 CARATS**  
Color Grade **FANCY VIVID PINK**  
Clarity Grade **VS 1**  
Depth **72.7%**  
Table **55%**  
Girdle **Slightly Thick**  
Culet **Pointed**  
Polish **VERY GOOD**  
Symmetry **VERY GOOD**  
Fluorescence **SLIGHT**  
Inscription(s) **IGI LG784689057**

Comments: This Laboratory Grown Diamond was created by Chemical Vapor Deposition (CVD) growth process. Indications of post-growth treatment.