



ELECTRONIC COPY

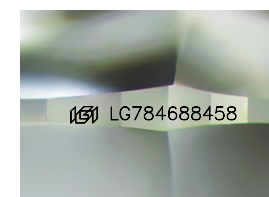
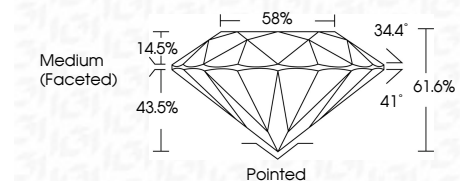
LG784688458
Report verification at igi.org



March 30, 2026
IGI Report Number **LG784688458**
Description **LABORATORY GROWN DIAMOND**
Shape and Cutting Style **ROUND BRILLIANT**
Measurements **6.53 - 6.56 X 4.03 MM**

GRADING RESULTS

Carat Weight **1.07 CARAT**
Color Grade **G**
Clarity Grade **VS 1**
Cut Grade **IDEAL**



Sample Image Used

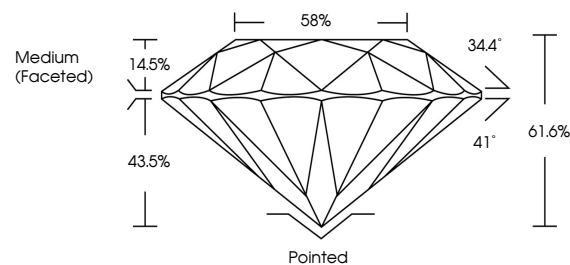
ADDITIONAL GRADING INFORMATION

Polish **EXCELLENT**
Symmetry **EXCELLENT**
Fluorescence **NONE**
Inscription(s) **IGI LG784688458**
Comments: This Laboratory Grown Diamond was created by Chemical Vapor Deposition (CVD) growth process. Type IIa

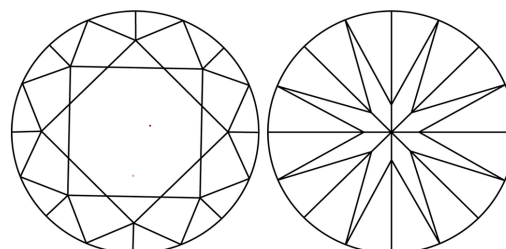


March 30, 2026
IGI Report No **LG784688458**
ROUND BRILLIANT
Carat Weight **1.07 CARAT**
Color Grade **G**
Clarity Grade **VS 1**
Depth **IDEAL**
Table **61.6%**
Girdle **14.5%**
Height **43.5%**
Culet **Pointed**
Polish **EXCELLENT**
Symmetry **EXCELLENT**
Fluorescence **NONE**
Inscription(s) **IGI LG784688458**
Comments: This Laboratory Grown Diamond was created by Chemical Vapor Deposition (CVD) growth process. Type IIa

PROPORTIONS



CLARITY CHARACTERISTICS



KEY TO SYMBOLS

Red symbols indicate internal characteristics.
Green symbols indicate external characteristics.

COLOR

D E F G H I J Faint Very Light Light

CLARITY

FL	IF	VS ¹⁻²	VS ¹⁻²	SI ¹⁻²	I ¹⁻³
Flawless	Internally Flawless	Very Very Slightly Included	Very Slightly Included	Slightly Included	Included

