



March 25, 2026

IGI Report Number **LG784687223**

ROUND ROSE CUT

LABORATORY GROWN DIAMOND

6.52 - 6.67 X 1.61 MM

Carat Weight **0.61 CARAT**

Color Grade **FANCY VIVID BLUE**

Clarity Grade **SI 1**

Polish **EXCELLENT**

Symmetry **VERY GOOD**

Fluorescence **NONE**

Inscription(s) **IGI LG784687223**

Comments: This Laboratory Grown Diamond was created by High Pressure High Temperature (HPHT) growth process. Indications of post-growth treatment.

LABORATORY GROWN DIAMOND REPORT

March 25, 2026

IGI Report Number

LG784687223

Description

LABORATORY GROWN DIAMOND

Shape and Cutting Style

ROUND ROSE CUT

Measurements

6.52 - 6.67 X 1.61 MM

GRADING RESULTS

Carat Weight

0.61 CARAT

Color Grade

FANCY VIVID BLUE

Clarity Grade

SI 1

ADDITIONAL GRADING INFORMATION

Polish

EXCELLENT

Symmetry

VERY GOOD

Fluorescence

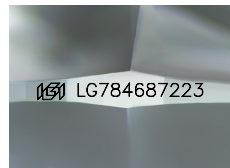
NONE

Inscription(s)

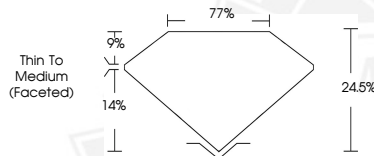
IGI LG784687223

Comments: This Laboratory Grown Diamond was created by High Pressure High Temperature (HPHT) growth process.

Indications of post-growth treatment.



Sample Image Used



March 25, 2026

IGI Report Number **LG784687223**

ROUND ROSE CUT

LABORATORY GROWN DIAMOND

6.52 - 6.67 X 1.61 MM

Carat Weight **0.61 CARAT**

Color Grade **FANCY VIVID BLUE**

Clarity Grade **SI 1**

Polish **EXCELLENT**

Symmetry **VERY GOOD**

Fluorescence **NONE**

Inscription(s) **IGI LG784687223**

Comments: This Laboratory Grown Diamond was created by High Pressure High Temperature (HPHT) growth process. Indications of post-growth treatment.



THIS DOCUMENT WAS PRODUCED WITH THE FOLLOWING SECURITY MEASURES: SPECIAL DOCUMENT PAPER, INK SCREENS, WATERMARK, BACKGROUND DESIGNS, HOLOGRAM AND OTHER SECURITY FEATURES NOT LISTED AND DO EXCEED DOCUMENT SECURITY INDUSTRY GUIDELINES.