



**ELECTRONIC COPY**

LG784686349  
Report verification at igi.org



March 20, 2026

IGI Report Number **LG784686349**

Description **LABORATORY GROWN DIAMOND**

Shape and Cutting Style **OVAL BRILLIANT**

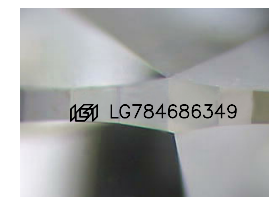
Measurements **10.18 X 7.09 X 4.53 MM**

**GRADING RESULTS**

Carat Weight **2.09 CARATS**

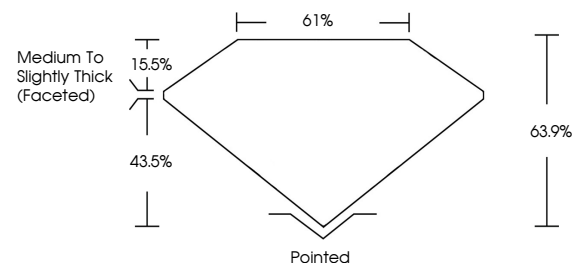
Color Grade **D**

Clarity Grade **VVS 2**

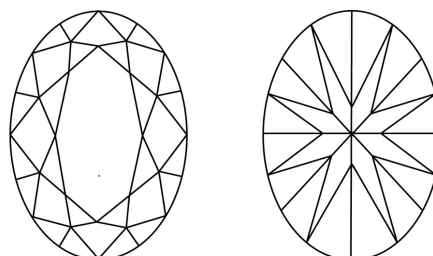


Sample Image Used

**PROPORTIONS**



**CLARITY CHARACTERISTICS**



**KEY TO SYMBOLS**

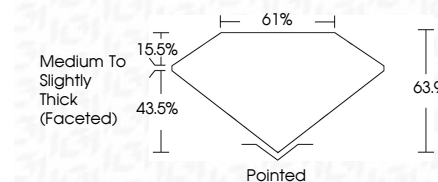
Red symbols indicate internal characteristics.  
Green symbols indicate external characteristics.

**COLOR**

D E F G H I J Faint Very Light Light

**CLARITY**

FL	IF	VS <sup>1-2</sup>	VS <sup>1-2</sup>	SI <sup>1-2</sup>	I <sup>1-3</sup>
Flawless	Internally Flawless	Very Very Slightly Included	Very Slightly Included	Slightly Included	Included



**ADDITIONAL GRADING INFORMATION**

Polish **EXCELLENT**

Symmetry **EXCELLENT**

Fluorescence **NONE**

Inscription(s) **IGI LG784686349**

Comments: This Laboratory Grown Diamond was created by Chemical Vapor Deposition (CVD) growth process. Type IIa



**IGI**



March 20, 2026	IGI Report No LG784686349	2.09 CARATS	D
OVAL BRILLIANT	10.18 X 7.09 X 4.53 MM	Color Grade	VVS 2
Clarity Grade	Depth	Table	61%
Girdle	Medium to Slightly Thick (Faceted)	Culet	Pointed
Polish	EXCELLENT	Symmetry	EXCELLENT
Fluorescence	NONE	Inscription(s)	IGI LG784686349

Comments: This Laboratory Grown Diamond was created by Chemical Vapor Deposition (CVD) growth process. Type IIa