



ELECTRONIC COPY

LG784686045
Report verification at igi.org



March 24, 2026

IGI Report Number **LG784686045**

Description **LABORATORY GROWN DIAMOND**

Shape and Cutting Style **PRINCESS CUT**

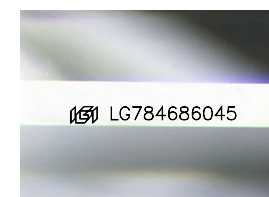
Measurements **9.41 X 9.35 X 6.83 MM**

GRADING RESULTS

Carat Weight **5.06 CARATS**

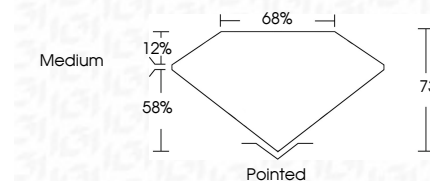
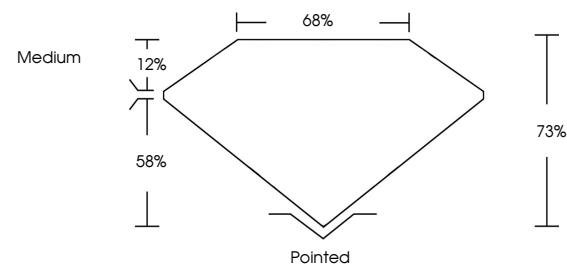
Color Grade **E**

Clarity Grade **VVS 2**

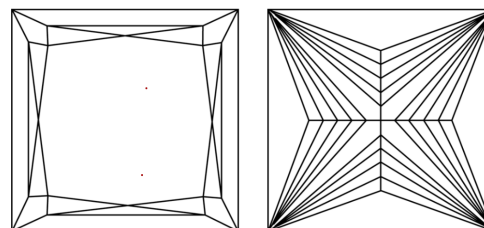


Sample Image Used

PROPORTIONS



CLARITY CHARACTERISTICS



KEY TO SYMBOLS

Red symbols indicate internal characteristics.
Green symbols indicate external characteristics.

COLOR

D E F G H I J Faint Very Light Light

CLARITY

FL	IF	VS ¹⁻²	VS ¹⁻²	SI ¹⁻²	I ¹⁻³
Flawless	Internally Flawless	Very Very Slightly Included	Very Slightly Included	Slightly Included	Included

ADDITIONAL GRADING INFORMATION

Polish **EXCELLENT**

Symmetry **EXCELLENT**

Fluorescence **NONE**

Inscription(s) **IGI LG784686045**

Comments: This Laboratory Grown Diamond was created by Chemical Vapor Deposition (CVD) growth process. Type IIa



IGI

March 24, 2026
IGI Report No LG784686045
PRINCESS CUT

5.06 CARATS
E

9.41 X 9.35 X 6.83 MM
Color Grade
Clarity Grade
Depth
Table
Girdle
Medium

Polished
EXCELLENT
EXCELLENT
NONE
IGI LG784686045

Comments: This Laboratory Grown Diamond was created by Chemical Vapor Deposition (CVD) growth process. Type IIa