



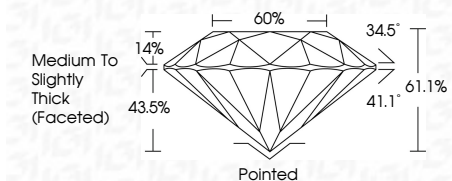
ELECTRONIC COPY

LG784685989 Report verification at igi.org



March 23, 2026 IGI Report Number LG784685989 Description LABORATORY GROWN DIAMOND Shape and Cutting Style ROUND BRILLIANT Measurements 6.59 - 6.64 X 4.04 MM

GRADING RESULTS Carat Weight 1.08 CARAT Color Grade D Clarity Grade VVS 2 Cut Grade IDEAL



ADDITIONAL GRADING INFORMATION Polish EXCELLENT Symmetry EXCELLENT Fluorescence NONE Inscription(s) IGI LG784685989 Comments: This Laboratory Grown Diamond was created by Chemical Vapor Deposition (CVD) growth process. Type IIa



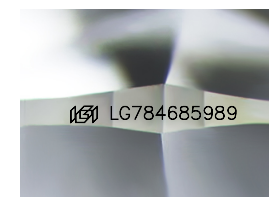
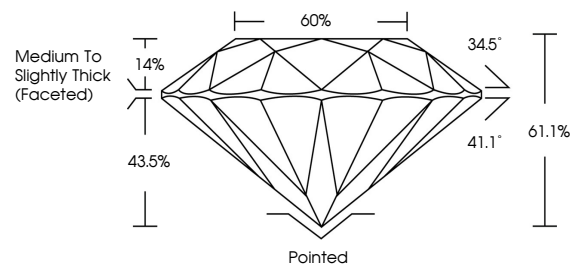
March 23, 2026 IGI Report No LG784685989 ROUND BRILLIANT 1.08 CARAT D 6.59 - 6.64 X 4.04 MM VVS 2 IDEAL 61.1% 60% Medium To Slightly Thick (Faceted) Pointed EXCELLENT EXCELLENT NONE IGI LG784685989 Comments: This Laboratory Grown Diamond was created by Chemical Vapor Deposition (CVD) growth process. Type IIa

March 23, 2026 IGI Report Number LG784685989 Description LABORATORY GROWN DIAMOND Shape and Cutting Style ROUND BRILLIANT Measurements 6.59 - 6.64 X 4.04 MM GRADING RESULTS Carat Weight 1.08 CARAT Color Grade D Clarity Grade VVS 2 Cut Grade IDEAL

ADDITIONAL GRADING INFORMATION Polish EXCELLENT Symmetry EXCELLENT Fluorescence NONE Inscription(s) IGI LG784685989

Comments: This Laboratory Grown Diamond was created by Chemical Vapor Deposition (CVD) growth process. Type IIa

PROPORTIONS



Sample Image Used

COLOR

D E F G H I J Faint Very Light Light

CLARITY

FL IF VS 1-2 VS 1-2 SI 1-2 I 1-3 Flawless Internally Flawless Very Very Slightly Included Very Slightly Included Slightly Included Included

