



**ELECTRONIC COPY**

LG784682942  
Report verification at igi.org



March 28, 2026

IGI Report Number **LG784682942**

Description **LABORATORY GROWN DIAMOND**

Shape and Cutting Style **ROUND BRILLIANT**

Measurements **7.59 - 7.68 X 4.54 MM**

**GRADING RESULTS**

Carat Weight **1.60 CARAT**

Color Grade **G**

Clarity Grade **VS 2**

Cut Grade **IDEAL**

March 28, 2026  
IGI Report Number **LG784682942**  
Description **LABORATORY GROWN DIAMOND**  
Shape and Cutting Style **ROUND BRILLIANT**  
Measurements **7.59 - 7.68 X 4.54 MM**

**GRADING RESULTS**

Carat Weight **1.60 CARAT**

Color Grade **G**

Clarity Grade **VS 2**

Cut Grade **IDEAL**

**ADDITIONAL GRADING INFORMATION**

Polish **EXCELLENT**

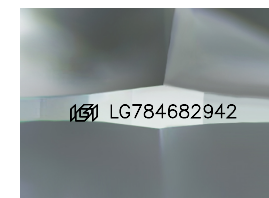
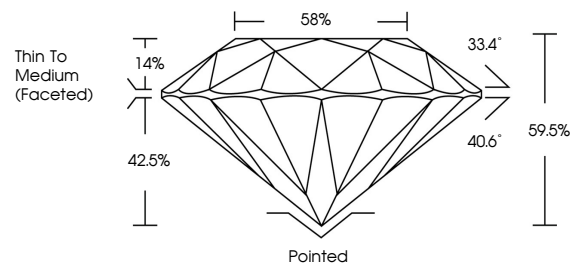
Symmetry **EXCELLENT**

Fluorescence **NONE**

Inscription(s) **IGI LG784682942**

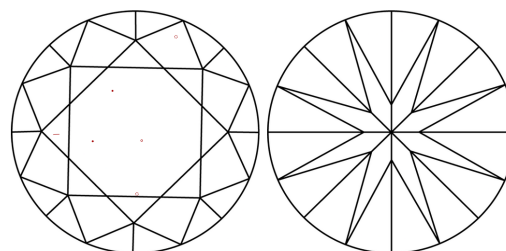
Comments: This Laboratory Grown Diamond was created by Chemical Vapor Deposition (CVD) growth process.  
Type IIa

**PROPORTIONS**



Sample Image Used

**CLARITY CHARACTERISTICS**



**KEY TO SYMBOLS**

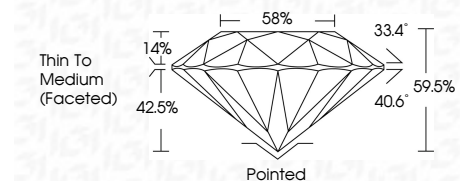
Red symbols indicate internal characteristics.  
Green symbols indicate external characteristics.

**COLOR**

D E F G H I J Faint Very Light Light

**CLARITY**

| FL       | IF                  | VS <sup>1-2</sup>           | VS <sup>1-2</sup>      | SI <sup>1-2</sup> | I <sup>1-3</sup> |
|----------|---------------------|-----------------------------|------------------------|-------------------|------------------|
| Flawless | Internally Flawless | Very Very Slightly Included | Very Slightly Included | Slightly Included | Included         |



**ADDITIONAL GRADING INFORMATION**

Polish **EXCELLENT**

Symmetry **EXCELLENT**

Fluorescence **NONE**

Inscription(s) **IGI LG784682942**

Comments: This Laboratory Grown Diamond was created by Chemical Vapor Deposition (CVD) growth process.  
Type IIa



|                       |                           |                 |               |           |       |       |        |       |                          |          |              |                |  |                 |
|-----------------------|---------------------------|-----------------|---------------|-----------|-------|-------|--------|-------|--------------------------|----------|--------------|----------------|--|-----------------|
| March 28, 2026        | IGI Report No LG784682942 | ROUND BRILLIANT | 1.60 CARAT    | G         | VS 2  | IDEAL | 59.5%  | 58%   | Thin To Medium (Faceted) | Pointed  | EXCELLENT    | EXCELLENT      | NONE   | IGI LG784682942 |
| 7.59 - 7.68 X 4.54 MM | Carat Weight              | Color Grade     | Clarity Grade | Cut Grade | Depth | Table | Girdle | Culet | Polish                   | Symmetry | Fluorescence | Inscription(s) | Comments: This Laboratory Grown Diamond was created by Chemical Vapor Deposition (CVD) growth process.<br>Type IIa |                 |