



**INTERNATIONAL
GEMOLOGICAL
INSTITUTE**

ELECTRONIC COPY



March 25, 2026

IGI Report Number **LG784680482**

**PRINCESS CUT
LABORATORY GROWN DIAMOND
3.47 X 3.45 X 2.52 MM**

Carat Weight **0.27 CARAT**
Color Grade **FANCY VIVID
YELLOW**

Clarity Grade **VS 1**
Polish **VERY GOOD**
Symmetry **VERY GOOD**
Fluorescence **NONE**
Inscription(s) **IGI LG784680482**

Comments: As Grown - No indication of post-growth treatment. This Laboratory Grown Diamond was created by High Pressure High Temperature (HPHT) growth process.

LABORATORY GROWN DIAMOND REPORT

March 25, 2026
IGI Report Number **LG784680482**
Description **LABORATORY GROWN DIAMOND**
Shape and Cutting Style **PRINCESS CUT**
Measurements **3.47 X 3.45 X 2.52 MM**

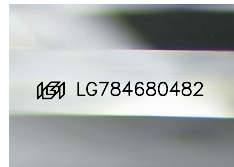
GRADING RESULTS

Carat Weight **0.27 CARAT**
Color Grade **FANCY VIVID YELLOW**
Clarity Grade **VS 1**

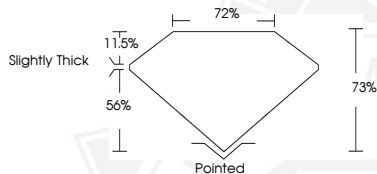
ADDITIONAL GRADING INFORMATION

Polish **VERY GOOD**
Symmetry **VERY GOOD**
Fluorescence **NONE**
Inscription(s) **IGI LG784680482**

Comments: As Grown - No indication of post-growth treatment. This Laboratory Grown Diamond was created by High Pressure High Temperature (HPHT) growth process.



Sample Image Used



March 25, 2026

IGI Report Number **LG784680482**

**PRINCESS CUT
LABORATORY GROWN DIAMOND
3.47 X 3.45 X 2.52 MM**

Carat Weight **0.27 CARAT**
Color Grade **FANCY VIVID
YELLOW**

Clarity Grade **VS 1**
Polish **VERY GOOD**
Symmetry **VERY GOOD**
Fluorescence **NONE**
Inscription(s) **IGI LG784680482**

Comments: As Grown - No indication of post-growth treatment. This Laboratory Grown Diamond was created by High Pressure High Temperature (HPHT) growth process.



THIS DOCUMENT WAS PRODUCED WITH THE FOLLOWING SECURITY MEASURES: SPECIAL DOCUMENT PAPER, INK SCREENS, WATERMARK, BACKGROUND DESIGNS, HOLOGRAM AND OTHER SECURITY FEATURES NOT LISTED AND DO EXCEED DOCUMENT SECURITY INDUSTRY GUIDELINES.

For terms & conditions and to verify this report, please visit www.igi.org