



**ELECTRONIC COPY**

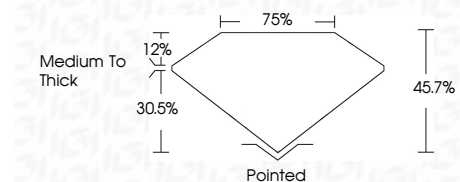
LG784680208  
Report verification at igi.org



March 20, 2026  
IGI Report Number **LG784680208**  
Description **LABORATORY GROWN DIAMOND**  
Shape and Cutting Style **HALF MOON BRILLIANT**  
Measurements **5.77 X 8.34 X 3.81 MM**

**GRADING RESULTS**

Carat Weight **1.26 CARAT**  
Color Grade **E**  
Clarity Grade **VVS 2**



**ADDITIONAL GRADING INFORMATION**

Polish **EXCELLENT**  
Symmetry **EXCELLENT**  
Fluorescence **NONE**  
Inscription(s) **(IGI) LG784680208**  
Comments: This Laboratory Grown Diamond was created by Chemical Vapor Deposition (CVD) growth process. Type IIa



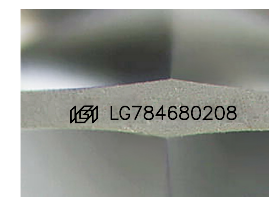
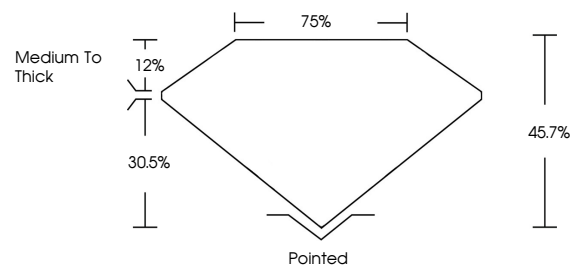
March 20, 2026  
IGI Report No **LG784680208**  
**HALF MOON BRILLIANT**  
Carat Weight **1.26 CARAT**  
Color Grade **E**  
Clarity Grade **VVS 2**  
Depth **45.7%**  
Table **75%**  
Girdle **Medium To Thick**  
Culet **Pointed**  
Polish **EXCELLENT**  
Symmetry **EXCELLENT**  
Fluorescence **NONE**  
Inscription(s) **(IGI) LG784680208**  
Comments: This Laboratory Grown Diamond was created by Chemical Vapor Deposition (CVD) growth process. Type IIa

March 20, 2026  
IGI Report Number **LG784680208**  
Description **LABORATORY GROWN DIAMOND**  
Shape and Cutting Style **HALF MOON BRILLIANT**  
Measurements **5.77 X 8.34 X 3.81 MM**  
**GRADING RESULTS**  
Carat Weight **1.26 CARAT**  
Color Grade **E**  
Clarity Grade **VVS 2**

**ADDITIONAL GRADING INFORMATION**

Polish **EXCELLENT**  
Symmetry **EXCELLENT**  
Fluorescence **NONE**  
Inscription(s) **(IGI) LG784680208**  
Comments: This Laboratory Grown Diamond was created by Chemical Vapor Deposition (CVD) growth process. Type IIa

**PROPORTIONS**



Sample Image Used

**COLOR**

D E F G H I J Faint Very Light Light

**CLARITY**

FL	IF	VVS <sup>1-2</sup>	VS <sup>1-2</sup>	SI <sup>1-2</sup>	I <sup>1-3</sup>
Flawless	Internally Flawless	Very Very Slightly Included	Very Slightly Included	Slightly Included	Included

