



March 27, 2026

IGI Report Number **LG784680064**

**OVAL BRILLIANT
LABORATORY GROWN DIAMOND
7.05 X 5.05 X 3.14 MM**

Carat Weight **0.70 CARAT**
Color Grade **D**
Clarity Grade **VVS 2**
Polish **EXCELLENT**
Symmetry **EXCELLENT**
Fluorescence **NONE**
Inscription(s) **IGI LG784680064**

Comments: As Grown - No indication of post-growth treatment. This Laboratory Grown Diamond was created by High Pressure High Temperature (HPHT) growth process. Type II

LABORATORY GROWN DIAMOND REPORT

March 27, 2026
IGI Report Number **LG784680064**
Description **LABORATORY GROWN DIAMOND**
Shape and Cutting Style **OVAL BRILLIANT**
Measurements **7.05 X 5.05 X 3.14 MM**

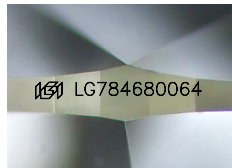
GRADING RESULTS

Carat Weight **0.70 CARAT**
Color Grade **D**
Clarity Grade **VVS 2**

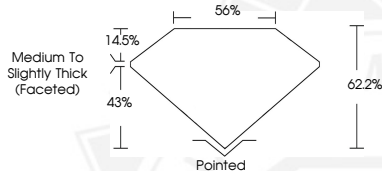
ADDITIONAL GRADING INFORMATION

Polish **EXCELLENT**
Symmetry **EXCELLENT**
Fluorescence **NONE**
Inscription(s) **IGI LG784680064**

Comments: As Grown - No indication of post-growth treatment. This Laboratory Grown Diamond was created by High Pressure High Temperature (HPHT) growth process. Type II



Sample Image Used



March 27, 2026

IGI Report Number **LG784680064**

**OVAL BRILLIANT
LABORATORY GROWN DIAMOND
7.05 X 5.05 X 3.14 MM**

Carat Weight **0.70 CARAT**
Color Grade **D**
Clarity Grade **VVS 2**
Polish **EXCELLENT**
Symmetry **EXCELLENT**
Fluorescence **NONE**
Inscription(s) **IGI LG784680064**

Comments: As Grown - No indication of post-growth treatment. This Laboratory Grown Diamond was created by High Pressure High Temperature (HPHT) growth process. Type II



THIS DOCUMENT WAS PRODUCED WITH THE FOLLOWING SECURITY MEASURES: SPECIAL DOCUMENT PAPER, INK SCREENS, WATERMARK, BACKGROUND DESIGNS, HOLOGRAM AND OTHER SECURITY FEATURES NOT LISTED AND DO EXCEED DOCUMENT SECURITY INDUSTRY GUIDELINES.