



ELECTRONIC COPY

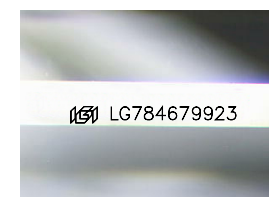
LG784679923
Report verification at igi.org



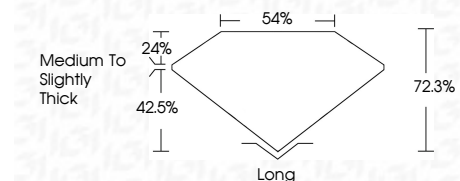
March 21, 2026
IGI Report Number **LG784679923**
Description **LABORATORY GROWN DIAMOND**
Shape and Cutting Style **TAPERED BAGUETTE**
Measurements **12.99 X 4.08 X 2.95 MM**

GRADING RESULTS

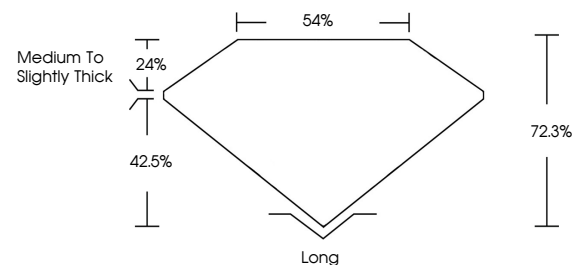
Carat Weight **1.24 CARAT**
Color Grade **E**
Clarity Grade **VVS 2**



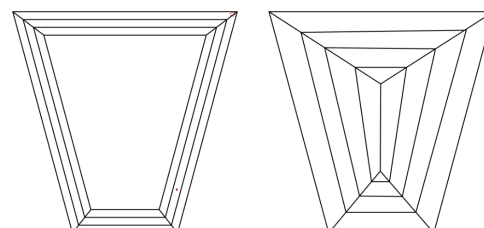
Sample Image Used



PROPORTIONS



CLARITY CHARACTERISTICS



KEY TO SYMBOLS

Red symbols indicate internal characteristics.
Green symbols indicate external characteristics.

COLOR

D E F G H I J Faint Very Light Light

CLARITY

FL	IF	VVS ¹⁻²	VS ¹⁻²	SI ¹⁻²	I ¹⁻³
Flawless	Internally Flawless	Very Very Slightly Included	Very Slightly Included	Slightly Included	Included

ADDITIONAL GRADING INFORMATION

Polish **EXCELLENT**
Symmetry **EXCELLENT**
Fluorescence **NONE**
Inscription(s) **IGI LG784679923**
Comments: This Laboratory Grown Diamond was created by Chemical Vapor Deposition (CVD) growth process. Type IIa



March 21, 2026
IGI Report No LG784679923
TAPERED BAGUETTE
12.99 X 4.08 X 2.95 MM
Carat Weight 1.24 CARAT
Color Grade E
Clarity Grade VVS 2
Depth 72.3%
Table 24%
Girdle 42.5%
Medium to Slightly Thick
Culet Long
Polish EXCELLENT
Symmetry EXCELLENT
Fluorescence NONE
Inscription(s) IGI LG784679923
Comments: This Laboratory Grown Diamond was created by Chemical Vapor Deposition (CVD) growth process. Type IIa