



ELECTRONIC COPY

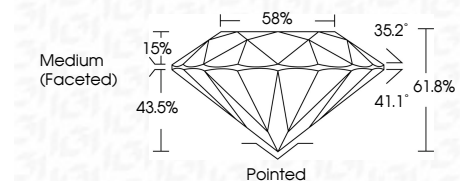
LG784678369
Report verification at igi.org



March 21, 2026
IGI Report Number **LG784678369**
Description **LABORATORY GROWN DIAMOND**
Shape and Cutting Style **ROUND BRILLIANT**
Measurements **7.41 - 7.46 X 4.60 MM**

GRADING RESULTS

Carat Weight **1.55 CARAT**
Color Grade **E**
Clarity Grade **VS 1**
Cut Grade **IDEAL**

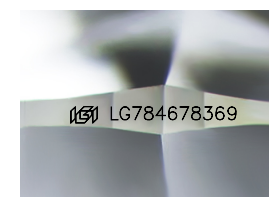


ADDITIONAL GRADING INFORMATION

Polish **EXCELLENT**
Symmetry **EXCELLENT**
Fluorescence **NONE**
Inscription(s) **IGI LG784678369**
Comments: This Laboratory Grown Diamond was created by Chemical Vapor Deposition (CVD) growth process. Type IIa

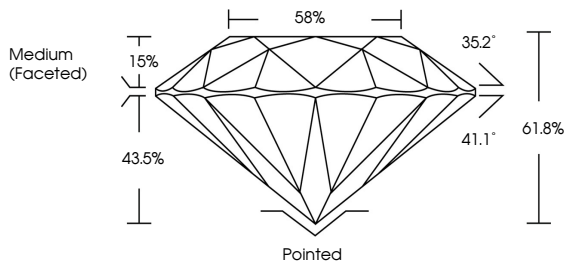


March 21, 2026
IGI Report No **LG784678369**
ROUND BRILLIANT
Carat Weight **1.55 CARAT**
Color Grade **E**
Clarity Grade **VS 1**
Depth **IDEAL**
Table **61.8%**
Girdle **Medium (Faceted)**
Culet **Pointed**
Polish **EXCELLENT**
Symmetry **EXCELLENT**
Fluorescence **NONE**
Inscription(s) **IGI LG784678369**
Comments: This Laboratory Grown Diamond was created by Chemical Vapor Deposition (CVD) growth process. Type IIa

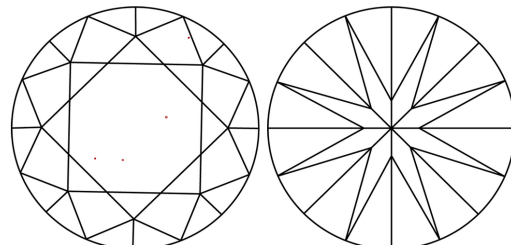


Sample Image Used

PROPORTIONS



CLARITY CHARACTERISTICS



KEY TO SYMBOLS

Red symbols indicate internal characteristics.
Green symbols indicate external characteristics.

COLOR

| | | | | | | | | | |
|---|---|---|---|---|---|---|-------|------------|-------|
| D | E | F | G | H | I | J | Faint | Very Light | Light |
|---|---|---|---|---|---|---|-------|------------|-------|

CLARITY

| | | | | | |
|----------|---------------------|-----------------------------|------------------------|-------------------|------------------|
| FL | IF | VS ¹⁻² | VS ¹⁻² | SI ¹⁻² | I ¹⁻³ |
| Flawless | Internally Flawless | Very Very Slightly Included | Very Slightly Included | Slightly Included | Included |

