



March 21, 2026

IGI Report Number **LG784671265**

**HEART BRILLIANT
LABORATORY GROWN DIAMOND
5.39 X 5.41 X 3.37 MM**

Carat Weight	0.56 CARAT
Color Grade	D
Clarity Grade	VS 1
Polish	VERY GOOD
Symmetry	VERY GOOD
Fluorescence	NONE
Inscription(s)	IGI LG784671265

Comments: As Grown - No indication of post-growth treatment. This Laboratory Grown Diamond was created by High Pressure High Temperature (HPHT) growth process. Type II

LABORATORY GROWN DIAMOND REPORT

March 21, 2026
IGI Report Number **LG784671265**
Description **LABORATORY GROWN DIAMOND**
Shape and Cutting Style **HEART BRILLIANT**
Measurements **5.39 X 5.41 X 3.37 MM**

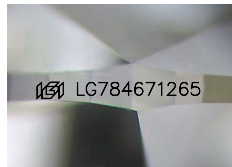
GRADING RESULTS

Carat Weight **0.56 CARAT**
Color Grade **D**
Clarity Grade **VS 1**

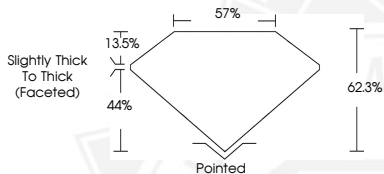
ADDITIONAL GRADING INFORMATION

Polish **VERY GOOD**
Symmetry **VERY GOOD**
Fluorescence **NONE**
Inscription(s) **IGI LG784671265**

Comments: As Grown - No indication of post-growth treatment. This Laboratory Grown Diamond was created by High Pressure High Temperature (HPHT) growth process. Type II



Sample Image Used



March 21, 2026

IGI Report Number **LG784671265**

**HEART BRILLIANT
LABORATORY GROWN DIAMOND
5.39 X 5.41 X 3.37 MM**

Carat Weight	0.56 CARAT
Color Grade	D
Clarity Grade	VS 1
Polish	VERY GOOD
Symmetry	VERY GOOD
Fluorescence	NONE
Inscription(s)	IGI LG784671265

Comments: As Grown - No indication of post-growth treatment. This Laboratory Grown Diamond was created by High Pressure High Temperature (HPHT) growth process. Type II



THIS DOCUMENT WAS PRODUCED WITH THE FOLLOWING SECURITY MEASURES: SPECIAL DOCUMENT PAPER, INK SCREENS, WATERMARK, BACKGROUND DESIGNS, HOLOGRAM AND OTHER SECURITY FEATURES NOT LISTED AND DO EXCEED DOCUMENT SECURITY INDUSTRY GUIDELINES.