



March 21, 2026

IGI Report Number **LG784671187**

**HEART BRILLIANT  
LABORATORY GROWN DIAMOND**

**5.36 X 5.44 X 3.06 MM**

Carat Weight	<b>0.51 CARAT</b>
Color Grade	<b>D</b>
Clarity Grade	<b>VS 1</b>
Polish	<b>VERY GOOD</b>
Symmetry	<b>GOOD</b>
Fluorescence	<b>NONE</b>
Inscription(s)	<b>IGI LG784671187</b>

Comments: As Grown - No indication of post-growth treatment. This Laboratory Grown Diamond was created by High Pressure High Temperature (HPHT) growth process. Type II

**LABORATORY GROWN DIAMOND REPORT**

March 21, 2026

IGI Report Number

**LG784671187**

Description

**LABORATORY GROWN DIAMOND**

Shape and Cutting Style

**HEART BRILLIANT**

Measurements

**5.36 X 5.44 X 3.06 MM**

**GRADING RESULTS**

Carat Weight

**0.51 CARAT**

Color Grade

**D**

Clarity Grade

**VS 1**

**ADDITIONAL GRADING INFORMATION**

Polish

**VERY GOOD**

Symmetry

**GOOD**

Fluorescence

**NONE**

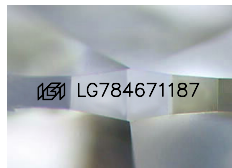
Inscription(s)

**IGI LG784671187**

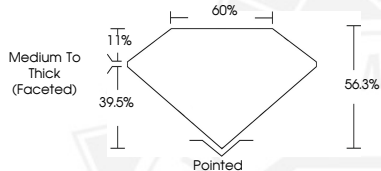
Comments: As Grown - No indication of post-growth treatment.

This Laboratory Grown Diamond was created by High Pressure High Temperature (HPHT) growth process.

Type II



Sample Image Used



March 21, 2026

IGI Report Number **LG784671187**

**HEART BRILLIANT  
LABORATORY GROWN DIAMOND**

**5.36 X 5.44 X 3.06 MM**

Carat Weight	<b>0.51 CARAT</b>
Color Grade	<b>D</b>
Clarity Grade	<b>VS 1</b>
Polish	<b>VERY GOOD</b>
Symmetry	<b>GOOD</b>
Fluorescence	<b>NONE</b>
Inscription(s)	<b>IGI LG784671187</b>

Comments: As Grown - No indication of post-growth treatment. This Laboratory Grown Diamond was created by High Pressure High Temperature (HPHT) growth process. Type II



THIS DOCUMENT WAS PRODUCED WITH THE FOLLOWING SECURITY MEASURES: SPECIAL DOCUMENT PAPER, INK SCREENS, WATERMARK, BACKGROUND DESIGNS, HOLOGRAM AND OTHER SECURITY FEATURES NOT LISTED AND DO EXCEED DOCUMENT SECURITY INDUSTRY GUIDELINES.