



ELECTRONIC COPY

LG784670810
Report verification at igi.org



March 28, 2026
IGI Report Number **LG784670810**
Description **LABORATORY GROWN DIAMOND**
Shape and Cutting Style **EMERALD CUT**
Measurements **15.62 X 9.87 X 6.56 MM**
GRADING RESULTS
Carat Weight **10.11 CARATS**
Color Grade **FANCY INTENSE BLUE**
Clarity Grade **VVS 2**

LABORATORY GROWN DIAMOND REPORT

March 28, 2026
IGI Report Number **LG784670810**
Description **LABORATORY GROWN DIAMOND**
Shape and Cutting Style **EMERALD CUT**
Measurements **15.62 X 9.87 X 6.56 MM**

GRADING RESULTS

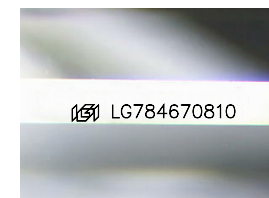
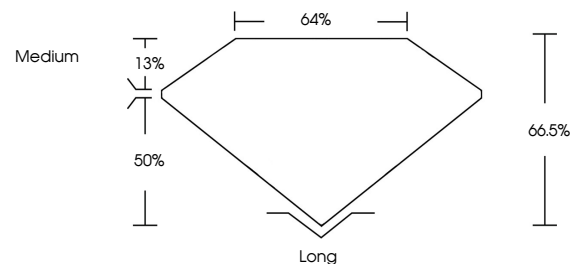
Carat Weight **10.11 CARATS**
Color Grade **FANCY INTENSE BLUE**
Clarity Grade **VVS 2**

ADDITIONAL GRADING INFORMATION

Polish **EXCELLENT**
Symmetry **EXCELLENT**
Fluorescence **NONE**
Inscription(s) **IGI LG784670810**

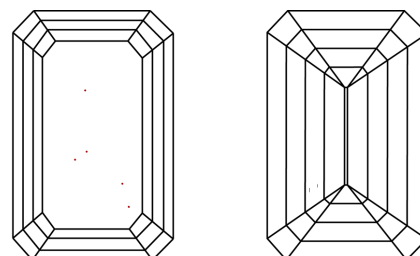
Comments: This Laboratory Grown Diamond was created by Chemical Vapor Deposition (CVD) growth process.
Indications of post-growth treatment.

PROPORTIONS



Sample Image Used

CLARITY CHARACTERISTICS



KEY TO SYMBOLS

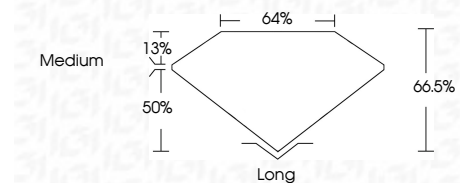
Red symbols indicate internal characteristics.
Green symbols indicate external characteristics.

COLOR

D E F G H I J Faint Very Light Light

CLARITY

FL	IF	VVS ¹⁻²	VS ¹⁻²	SI ¹⁻²	I ¹⁻³
Flawless	Internally Flawless	Very Very Slightly Included	Very Slightly Included	Slightly Included	Included



ADDITIONAL GRADING INFORMATION

Polish **EXCELLENT**
Symmetry **EXCELLENT**
Fluorescence **NONE**
Inscription(s) **IGI LG784670810**
Comments: This Laboratory Grown Diamond was created by Chemical Vapor Deposition (CVD) growth process.
Indications of post-growth treatment.



March 28, 2026
IGI Report No **LG784670810**
EMERALD CUT
10.11 CARATS
Carat Weight
Color Grade **FANCY INTENSE BLUE**
Clarity Grade **VVS 2**
Depth **66.5%**
Table **64%**
Girdle **Medium**
Culet **Long**
Polish **EXCELLENT**
Symmetry **EXCELLENT**
Fluorescence **NONE**
Inscription(s) **IGI LG784670810**
Comments: This Laboratory Grown Diamond was created by Chemical Vapor Deposition (CVD) growth process.
Indications of post-growth treatment.