



ELECTRONIC COPY

LG784670802
Report verification at igi.org



April 20, 2026
IGI Report Number LG784670802
Description LABORATORY GROWN DIAMOND
Shape and Cutting Style ROUND MIXED CUT
Measurements 6.37 - 6.38 X 3.94 MM
GRADING RESULTS
Carat Weight 1.04 CARAT
Color Grade FANCY BROWN PINK
Clarity Grade VS 1

April 20, 2026
IGI Report Number LG784670802
Description LABORATORY GROWN DIAMOND
Shape and Cutting Style ROUND MIXED CUT
Measurements 6.37 - 6.38 X 3.94 MM

GRADING RESULTS

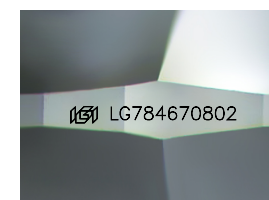
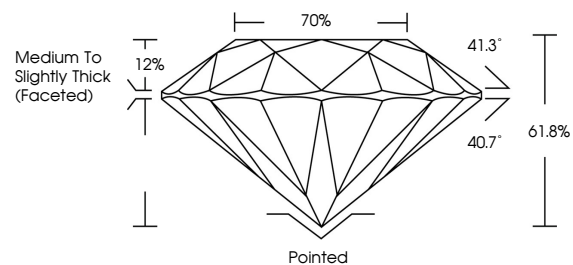
Carat Weight 1.04 CARAT
Color Grade FANCY BROWN PINK
Clarity Grade VS 1

ADDITIONAL GRADING INFORMATION

Polish VERY GOOD
Symmetry VERY GOOD
Fluorescence SLIGHT
Inscription(s) IGI LG784670802

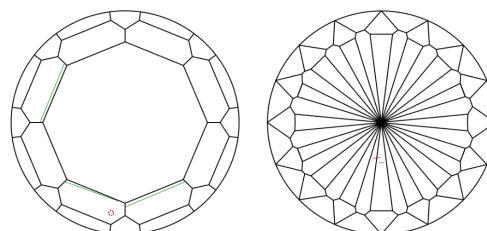
Comments: This Laboratory Grown Diamond was created by Chemical Vapor Deposition (CVD) growth process. Indications of post-growth treatment.

PROPORTIONS



Sample Image Used

CLARITY CHARACTERISTICS



KEY TO SYMBOLS

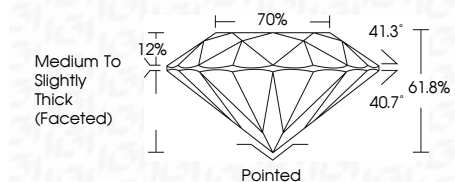
Red symbols indicate internal characteristics.
Green symbols indicate external characteristics.

COLOR

D E F G H I J Faint Very Light Light

CLARITY

FL IF VS 1-2 VS 2-3 SI 1-2 I 1-3
Flawless Internally Flawless Very Very Slightly Included Very Slightly Included Slightly Included Included



ADDITIONAL GRADING INFORMATION

Polish VERY GOOD
Symmetry VERY GOOD
Fluorescence SLIGHT
Inscription(s) IGI LG784670802
Comments: This Laboratory Grown Diamond was created by Chemical Vapor Deposition (CVD) growth process. Indications of post-growth treatment.



April 20, 2026
IGI Report No LG784670802
ROUND MIXED CUT
1.04 CARAT
FANCY BROWN PINK
VS 1
61.8%
70%
Medium to Slightly Thick (Faceted)
Polished
VERY GOOD
VERY GOOD
SLIGHT
IGI LG784670802
Comments: This Laboratory Grown Diamond was created by Chemical Vapor Deposition (CVD) growth process. Indications of post-growth treatment.