



**INTERNATIONAL
GEMOLOGICAL
INSTITUTE**

ELECTRONIC COPY



March 23, 2026

IGI Report Number **LG784669813**

ROUND BRILLIANT

LABORATORY GROWN DIAMOND

4.99 - 5.02 X 3.04 MM

Carat Weight **0.46 CARAT**
 Color Grade **D**
 Clarity Grade **I.F.**
 Cut Grade **IDEAL**
 Polish **EXCELLENT**
 Symmetry **EXCELLENT**
 Fluorescence **NONE**
 Inscription(s) **IGI LG784669813**

Comments: HEARTS & ARROWS As Grown - No indication of post-growth treatment. This Laboratory Grown Diamond was created by High Pressure High Temperature (HPHT) growth process. Type II

LABORATORY GROWN DIAMOND REPORT

March 23, 2026

IGI Report Number

LG784669813

Description

LABORATORY GROWN DIAMOND

Shape and Cutting Style

ROUND BRILLIANT

Measurements

4.99 - 5.02 X 3.04 MM

GRADING RESULTS

Carat Weight

0.46 CARAT

Color Grade

D

Clarity Grade

INTERNALLY FLAWLESS

Cut Grade

IDEAL

ADDITIONAL GRADING INFORMATION

Polish

EXCELLENT

Symmetry

EXCELLENT

Fluorescence

NONE

Inscription(s)

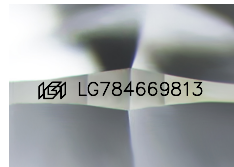
IGI LG784669813

Comments: HEARTS & ARROWS

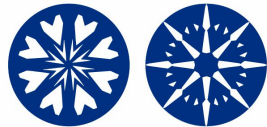
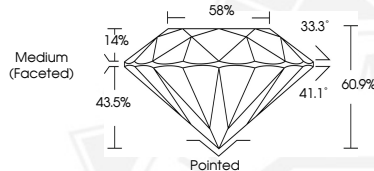
As Grown - No indication of post-growth treatment.

This Laboratory Grown Diamond was created by High Pressure High Temperature (HPHT) growth process.

Type II



Sample Image Used



HEARTS & ARROWS



March 23, 2026

IGI Report Number **LG784669813**

ROUND BRILLIANT

LABORATORY GROWN DIAMOND

4.99 - 5.02 X 3.04 MM

Carat Weight **0.46 CARAT**
 Color Grade **D**
 Clarity Grade **I.F.**
 Cut Grade **IDEAL**
 Polish **EXCELLENT**
 Symmetry **EXCELLENT**
 Fluorescence **NONE**
 Inscription(s) **IGI LG784669813**

Comments: HEARTS & ARROWS As Grown - No indication of post-growth treatment. This Laboratory Grown Diamond was created by High Pressure High Temperature (HPHT) growth process. Type II



THIS DOCUMENT WAS PRODUCED WITH THE FOLLOWING SECURITY MEASURES: SPECIAL DOCUMENT PAPER, INK SCREENS, WATERMARK, BACKGROUND DESIGNS, HOLOGRAM AND OTHER SECURITY FEATURES NOT LISTED AND DO EXCEED DOCUMENT SECURITY INDUSTRY GUIDELINES.

For terms & conditions and to verify this report, please visit www.igi.org