



ELECTRONIC COPY

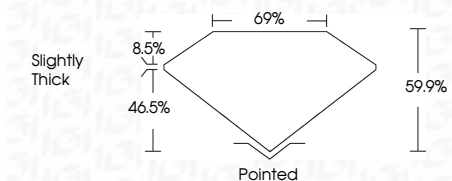
LG784669081
Report verification at igi.org



March 25, 2026
IGI Report Number **LG784669081**
Description **LABORATORY GROWN DIAMOND**
Shape and Cutting Style **HALF MOON BRILLIANT**
Measurements **12.87 X 8.41 X 5.04 MM**

GRADING RESULTS

Carat Weight **3.51 CARATS**
Color Grade **D**
Clarity Grade **VS 1**



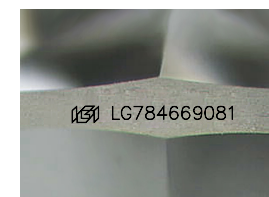
ADDITIONAL GRADING INFORMATION

Polish **EXCELLENT**
Symmetry **EXCELLENT**
Fluorescence **NONE**
Inscription(s) **IGI LG784669081**
Comments: This Laboratory Grown Diamond was created by Chemical Vapor Deposition (CVD) growth process. Type IIa



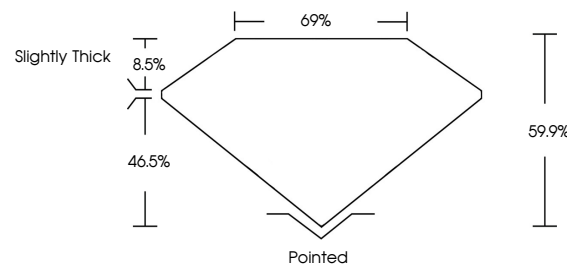
IGI

March 25, 2026
IGI Report No **LG784669081**
HALF MOON BRILLIANT
12.87 X 8.41 X 5.04 MM
Carat Weight **3.51 CARATS**
Color Grade **D**
Clarity Grade **VS 1**
Table **85%**
Depth **69%**
Girdle **Slightly Thick**
Culet **Pointed**
Polish **EXCELLENT**
Symmetry **EXCELLENT**
Fluorescence **NONE**
Inscription(s) **IGI LG784669081**
Comments: This Laboratory Grown Diamond was created by Chemical Vapor Deposition (CVD) growth process. Type IIa



Sample Image Used

PROPORTIONS



COLOR

D E F G H I J Faint Very Light Light

CLARITY

FL	IF	VS ¹⁻²	VS ¹⁻²	SI ¹⁻²	I ¹⁻³
Flawless	Internally Flawless	Very Very Slightly Included	Very Slightly Included	Slightly Included	Included

