



**ELECTRONIC COPY**

LG784665968  
Report verification at igi.org



April 18, 2026  
IGI Report Number **LG784665968**  
Description **LABORATORY GROWN DIAMOND**  
Shape and Cutting Style **MODIFIED HEXAGONAL BRILLIANT**  
Measurements **22.92 X 13.01 X 8.11 MM**  
**GRADING RESULTS**  
Carat Weight **17.23 CARATS**  
Color Grade **G**  
Clarity Grade **VVS 2**

April 18, 2026  
IGI Report Number **LG784665968**  
Description **LABORATORY GROWN DIAMOND**  
Shape and Cutting Style **MODIFIED HEXAGONAL BRILLIANT**  
Measurements **22.92 X 13.01 X 8.11 MM**

**GRADING RESULTS**

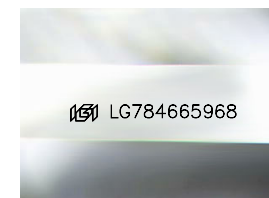
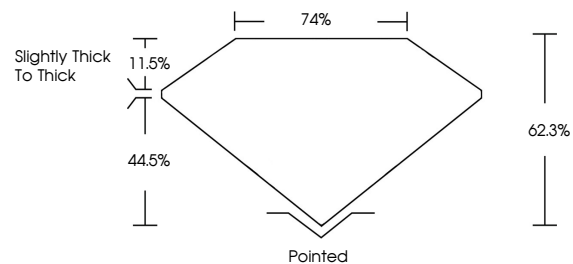
Carat Weight **17.23 CARATS**  
Color Grade **G**  
Clarity Grade **VVS 2**

**ADDITIONAL GRADING INFORMATION**

Polish **EXCELLENT**  
Symmetry **EXCELLENT**  
Fluorescence **NONE**  
Inscription(s) **IGI LG784665968**

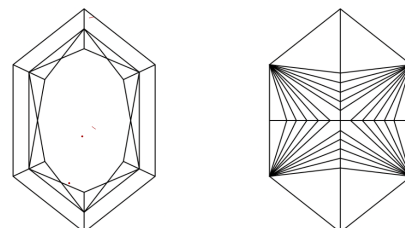
Comments: This Laboratory Grown Diamond was created by Chemical Vapor Deposition (CVD) growth process.  
Type IIa

**PROPORTIONS**



Sample Image Used

**CLARITY CHARACTERISTICS**



**KEY TO SYMBOLS**

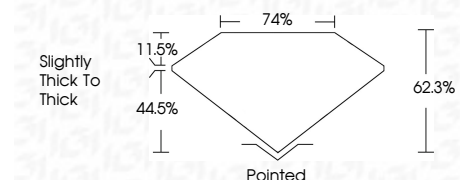
Red symbols indicate internal characteristics.  
Green symbols indicate external characteristics.

**COLOR**

D E F G H I J Faint Very Light Light

**CLARITY**

FL	IF	VVS <sup>1-2</sup>	VS <sup>1-2</sup>	SI <sup>1-2</sup>	I <sup>1-3</sup>
Flawless	Internally Flawless	Very Very Slightly Included	Very Slightly Included	Slightly Included	Included



**ADDITIONAL GRADING INFORMATION**

Polish **EXCELLENT**  
Symmetry **EXCELLENT**  
Fluorescence **NONE**  
Inscription(s) **IGI LG784665968**  
Comments: This Laboratory Grown Diamond was created by Chemical Vapor Deposition (CVD) growth process.  
Type IIa



April 18, 2026  
IGI Report No **LG784665968**  
**MODIFIED HEXAGONAL BRILLIANT**  
22.92 X 13.01 X 8.11 MM  
Carat Weight **17.23 CARATS**  
Color Grade **G**  
Clarity Grade **VVS 2**  
Depth **62.3%**  
Table **74%**  
Girdle **Slightly thick to thick**  
Culet **Pointed**  
Polish **EXCELLENT**  
Symmetry **EXCELLENT**  
Fluorescence **NONE**  
Inscription(s) **IGI LG784665968**  
Comments: This Laboratory Grown Diamond was created by Chemical Vapor Deposition (CVD) growth process.  
Type IIa