



**ELECTRONIC COPY**

LG784665509  
Report verification at igi.org



March 21, 2026

IGI Report Number **LG784665509**

Description **LABORATORY GROWN DIAMOND**

Shape and Cutting Style **HEART BRILLIANT**

Measurements **13.41 X 14.80 X 8.69 MM**

**GRADING RESULTS**

Carat Weight **10.09 CARATS**

Color Grade **E**

Clarity Grade **VS 1**

March 21, 2026  
IGI Report Number **LG784665509**  
Description **LABORATORY GROWN DIAMOND**  
Shape and Cutting Style **HEART BRILLIANT**  
Measurements **13.41 X 14.80 X 8.69 MM**

**GRADING RESULTS**

Carat Weight **10.09 CARATS**

Color Grade **E**

Clarity Grade **VS 1**

**ADDITIONAL GRADING INFORMATION**

Polish **EXCELLENT**

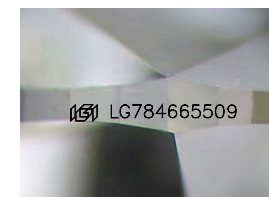
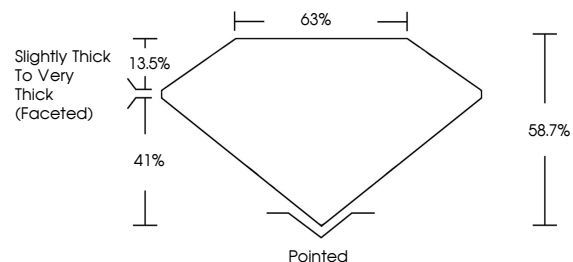
Symmetry **EXCELLENT**

Fluorescence **NONE**

Inscription(s) **IGI LG784665509**

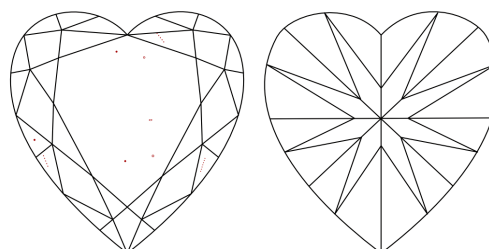
Comments: This Laboratory Grown Diamond was created by Chemical Vapor Deposition (CVD) growth process. Type IIa

**PROPORTIONS**



Sample Image Used

**CLARITY CHARACTERISTICS**



**KEY TO SYMBOLS**

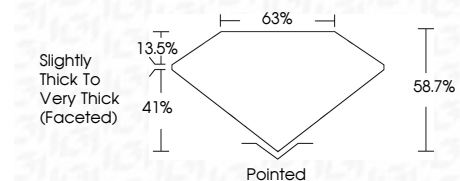
Red symbols indicate internal characteristics.  
Green symbols indicate external characteristics.

**COLOR**

D E F G H I J Faint Very Light Light

**CLARITY**

FL	IF	VS <sup>1-2</sup>	VS <sup>1-2</sup>	SI <sup>1-2</sup>	I <sup>1-3</sup>
Flawless	Internally Flawless	Very Very Slightly Included	Very Slightly Included	Slightly Included	Included



**ADDITIONAL GRADING INFORMATION**

Polish **EXCELLENT**

Symmetry **EXCELLENT**

Fluorescence **NONE**

Inscription(s) **IGI LG784665509**

Comments: This Laboratory Grown Diamond was created by Chemical Vapor Deposition (CVD) growth process. Type IIa



March 21, 2026  
IGI Report No LG784665509  
HEART BRILLIANT

13.41 X 14.80 X 8.69 MM

10.09 CARATS  
E

Carat Weight  
Color Grade  
Clarity Grade  
Depth  
Table  
Girdle

VS 1  
58.7%  
65%

Slightly Thick To Very Thick (Faceted)

Pointed  
EXCELLENT  
EXCELLENT  
NONE  
IGI LG784665509

Culet  
Polish  
Symmetry  
Fluorescence  
Inscription(s)

Comments: This Laboratory Grown Diamond was created by Chemical Vapor Deposition (CVD) growth process. Type IIa