



**ELECTRONIC COPY**

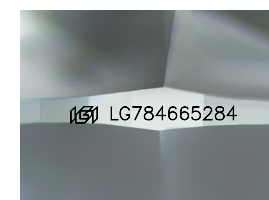
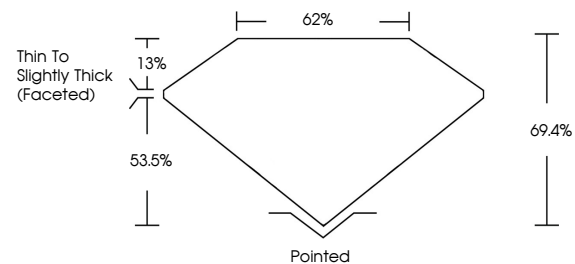
LG784665284  
Report verification at igi.org



March 21, 2026  
IGI Report Number **LG784665284**  
Description **LABORATORY GROWN DIAMOND**  
Shape and Cutting Style **CUSHION MODIFIED BRILLIANT**  
Measurements **10.09 X 7.36 X 5.11 MM**  
**GRADING RESULTS**  
Carat Weight **2.85 CARATS**  
Color Grade **D**  
Clarity Grade **VS 1**

March 21, 2026  
IGI Report Number **LG784665284**  
Description **LABORATORY GROWN DIAMOND**  
Shape and Cutting Style **CUSHION MODIFIED BRILLIANT**  
Measurements **10.09 X 7.36 X 5.11 MM**

**PROPORTIONS**

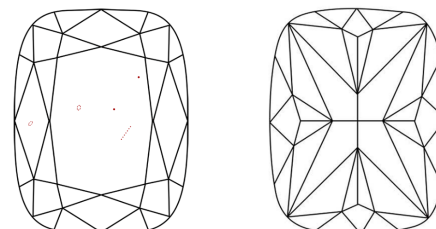


Sample Image Used

**GRADING RESULTS**

Carat Weight **2.85 CARATS**  
Color Grade **D**  
Clarity Grade **VS 1**

**CLARITY CHARACTERISTICS**



**KEY TO SYMBOLS**

Red symbols indicate internal characteristics.  
Green symbols indicate external characteristics.

**ADDITIONAL GRADING INFORMATION**

Polish **EXCELLENT**  
Symmetry **EXCELLENT**  
Fluorescence **NONE**  
Inscription(s) **IGI LG784665284**

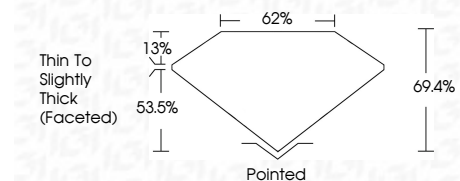
Comments: This Laboratory Grown Diamond was created by Chemical Vapor Deposition (CVD) growth process.  
Type IIa

**COLOR**

D E F G H I J Faint Very Light Light

**CLARITY**

FL	IF	VS <sup>1-2</sup>	VS <sup>1-2</sup>	SI <sup>1-2</sup>	I <sup>1-3</sup>
Flawless	Internally Flawless	Very Very Slightly Included	Very Slightly Included	Slightly Included	Included



**ADDITIONAL GRADING INFORMATION**

Polish **EXCELLENT**  
Symmetry **EXCELLENT**  
Fluorescence **NONE**  
Inscription(s) **IGI LG784665284**  
Comments: This Laboratory Grown Diamond was created by Chemical Vapor Deposition (CVD) growth process.  
Type IIa



March 21, 2026  
IGI Report No **LG784665284**  
**CUSHION MODIFIED BRILLIANT**  
**10.09 X 7.36 X 5.11 MM**  
Carat Weight **2.85 CARATS**  
Color Grade **D**  
Clarity Grade **VS 1**  
Depth **69.4%**  
Table **62%**  
Girdle **Thin to Slightly Thick (Faceted)**  
Culet **Pointed**  
Polish **EXCELLENT**  
Symmetry **EXCELLENT**  
Fluorescence **NONE**  
Inscription(s) **IGI LG784665284**  
Comments: This Laboratory Grown Diamond was created by Chemical Vapor Deposition (CVD) growth process.  
Type IIa