



ELECTRONIC COPY

LG784658016
Report verification at igi.org



March 31, 2026

IGI Report Number **LG784658016**

Description **LABORATORY GROWN DIAMOND**

Shape and Cutting Style **ROUND BRILLIANT**

Measurements **6.28 - 6.33 X 3.97 MM**

GRADING RESULTS

Carat Weight **1.00 CARAT**

Color Grade **FANCY VIVID PINK**

Clarity Grade **VS 2**

Cut Grade **EXCELLENT**

March 31, 2026
IGI Report Number **LG784658016**
Description **LABORATORY GROWN DIAMOND**
Shape and Cutting Style **ROUND BRILLIANT**
Measurements **6.28 - 6.33 X 3.97 MM**

GRADING RESULTS

Carat Weight **1.00 CARAT**

Color Grade **FANCY VIVID PINK**

Clarity Grade **VS 2**

Cut Grade **EXCELLENT**

ADDITIONAL GRADING INFORMATION

Polish **EXCELLENT**

Symmetry **EXCELLENT**

Fluorescence **SLIGHT**

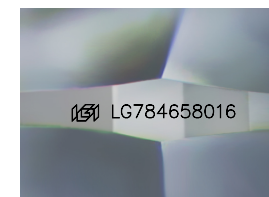
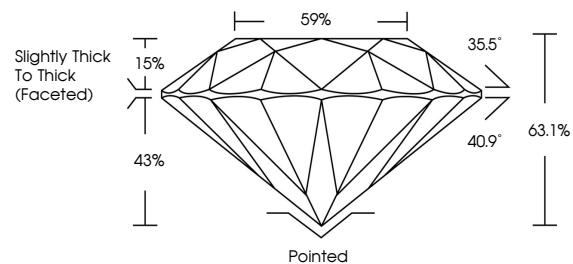
Inscription(s) **LG784658016**

Comments: This Laboratory Grown Diamond was created by Chemical Vapor Deposition (CVD) growth process.

Indications of post-growth treatment.

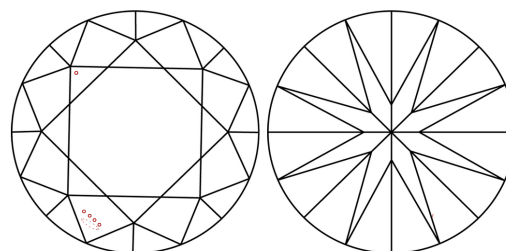
Secondary color: Orange

PROPORTIONS



Sample Image Used

CLARITY CHARACTERISTICS



KEY TO SYMBOLS

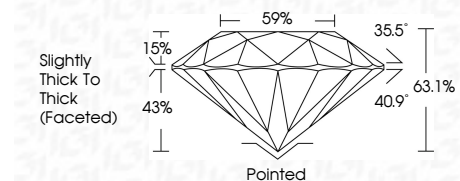
Red symbols indicate internal characteristics.
Green symbols indicate external characteristics.

COLOR

D E F G H I J Faint Very Light Light

CLARITY

FL	IF	VS ¹⁻²	VS ¹⁻²	SI ¹⁻²	I ¹⁻³
Flawless	Internally Flawless	Very Very Slightly Included	Very Slightly Included	Slightly Included	Included



ADDITIONAL GRADING INFORMATION

Polish **EXCELLENT**

Symmetry **EXCELLENT**

Fluorescence **SLIGHT**

Inscription(s) **LG784658016**

Comments: This Laboratory Grown Diamond was created by Chemical Vapor Deposition (CVD) growth process.

Indications of post-growth treatment.

Secondary color: Orange



IGI



March 31, 2026
IGI Report No **LG784658016**
ROUND BRILLIANT
6.28 - 6.33 X 3.97 MM
1.00 CARAT
FANCY VIVID PINK
VS 2
EXCELLENT
63.1%
59%
Slightly Thick To Thick (Faceted)
Pointed
EXCELLENT
EXCELLENT
SLIGHT
EXCELLENT
IGI LG784658016
Comments: This Laboratory Grown Diamond was created by Chemical Vapor Deposition (CVD) growth process. Indications of post-growth treatment. Secondary color: Orange