



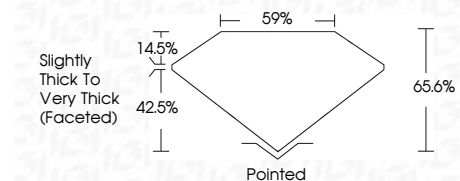
**ELECTRONIC COPY**

LG784656705  
Report verification at igi.org



April 1, 2026  
IGI Report Number **LG784656705**  
Description **LABORATORY GROWN DIAMOND**  
Shape and Cutting Style **OVAL MODIFIED BRILLIANT**  
Measurements **10.76 X 7.38 X 4.84 MM**

**GRADING RESULTS**  
Carat Weight **3.03 CARATS**  
Color Grade **FANCY VIVID PINK**  
Clarity Grade **VVS 2**



**ADDITIONAL GRADING INFORMATION**  
Polish **EXCELLENT**  
Symmetry **EXCELLENT**  
Fluorescence **STRONG**  
Inscription(s) **IGI LG784656705**  
Comments: This Laboratory Grown Diamond was created by Chemical Vapor Deposition (CVD) growth process. Indications of post-growth treatment.



April 1, 2026  
IGI Report No **LG784656705**  
**OVAL MODIFIED BRILLIANT**  
10.76 X 7.38 X 4.84 MM  
3.03 CARATS  
FANCY VIVID PINK  
VVS 2  
65.6%  
59%  
Slightly Thick To Very Thick (Faceted)  
Pointed  
EXCELLENT  
EXCELLENT  
STRONG  
IGI LG784656705  
Comments: This Laboratory Grown Diamond was created by Chemical Vapor Deposition (CVD) growth process. Indications of post-growth treatment.

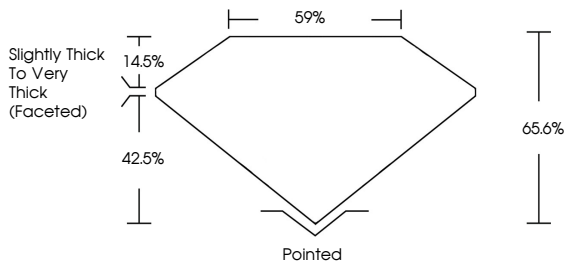
April 1, 2026  
IGI Report Number **LG784656705**  
Description **LABORATORY GROWN DIAMOND**  
Shape and Cutting Style **OVAL MODIFIED BRILLIANT**  
Measurements **10.76 X 7.38 X 4.84 MM**

**GRADING RESULTS**  
Carat Weight **3.03 CARATS**  
Color Grade **FANCY VIVID PINK**  
Clarity Grade **VVS 2**

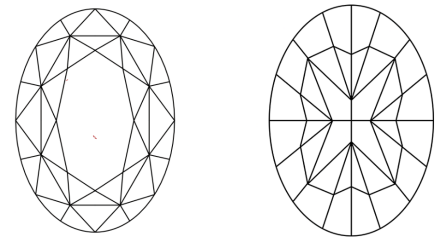
**ADDITIONAL GRADING INFORMATION**  
Polish **EXCELLENT**  
Symmetry **EXCELLENT**  
Fluorescence **STRONG**  
Inscription(s) **IGI LG784656705**

Comments: This Laboratory Grown Diamond was created by Chemical Vapor Deposition (CVD) growth process. Indications of post-growth treatment.

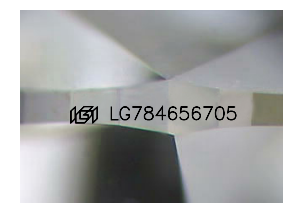
**PROPORTIONS**



**CLARITY CHARACTERISTICS**



**KEY TO SYMBOLS**  
Red symbols indicate internal characteristics.  
Green symbols indicate external characteristics.



Sample Image Used

**COLOR**

|   |   |   |   |   |   |   |       |            |       |
|---|---|---|---|---|---|---|-------|------------|-------|
| D | E | F | G | H | I | J | Faint | Very Light | Light |
|---|---|---|---|---|---|---|-------|------------|-------|

**CLARITY**

|          |                     |                             |                        |                   |                  |
|----------|---------------------|-----------------------------|------------------------|-------------------|------------------|
| FL       | IF                  | VVS <sup>1-2</sup>          | VS <sup>1-2</sup>      | SI <sup>1-2</sup> | I <sup>1-3</sup> |
| Flawless | Internally Flawless | Very Very Slightly Included | Very Slightly Included | Slightly Included | Included         |

