



**ELECTRONIC COPY**

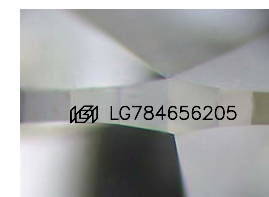
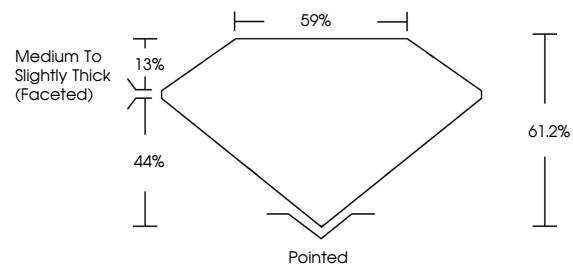
LG784656205  
Report verification at igi.org



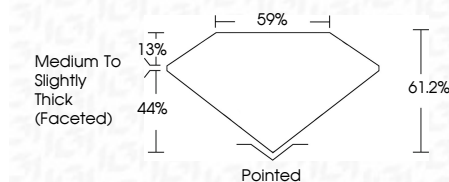
March 31, 2026  
IGI Report Number **LG784656205**  
Description **LABORATORY GROWN DIAMOND**  
Shape and Cutting Style **MARQUISE BRILLIANT**  
Measurements **12.93 X 6.55 X 4.01 MM**  
**GRADING RESULTS**  
Carat Weight **1.90 CARAT**  
Color Grade **E**  
Clarity Grade **VVS 2**

March 31, 2026  
IGI Report Number **LG784656205**  
Description **LABORATORY GROWN DIAMOND**  
Shape and Cutting Style **MARQUISE BRILLIANT**  
Measurements **12.93 X 6.55 X 4.01 MM**  
**GRADING RESULTS**  
Carat Weight **1.90 CARAT**  
Color Grade **E**  
Clarity Grade **VVS 2**

**PROPORTIONS**



Sample Image Used



**ADDITIONAL GRADING INFORMATION**

Polish **EXCELLENT**  
Symmetry **EXCELLENT**  
Fluorescence **NONE**  
Inscription(s) **IGI LG784656205**

Comments: This Laboratory Grown Diamond was created by Chemical Vapor Deposition (CVD) growth process.  
Type IIa

**ADDITIONAL GRADING INFORMATION**

Polish **EXCELLENT**  
Symmetry **EXCELLENT**  
Fluorescence **NONE**  
Inscription(s) **IGI LG784656205**  
Comments: This Laboratory Grown Diamond was created by Chemical Vapor Deposition (CVD) growth process.  
Type IIa

**COLOR**

D E F G H I J Faint Very Light Light

**CLARITY**

FL	IF	VVS <sup>1-2</sup>	VS <sup>1-2</sup>	SI <sup>1-2</sup>	I <sup>1-3</sup>
Flawless	Internally Flawless	Very Very Slightly Included	Very Slightly Included	Slightly Included	Included



**IGI**



March 31, 2026  
IGI Report No **LG784656205**  
**MARQUISE BRILLIANT**  
12.93 X 6.55 X 4.01 MM  
1.90 CARAT  
Color Grade **E**  
Clarity Grade **VVS 2**  
Table **61.2%**  
Girdle **6%**  
Medium to Slightly Thick (Faceted)  
Culet **Pointed**  
Polish **EXCELLENT**  
Symmetry **EXCELLENT**  
Fluorescence **NONE**  
Inscription(s) **IGI LG784656205**  
Comments: This Laboratory Grown Diamond was created by Chemical Vapor Deposition (CVD) growth process.  
Type IIa