



**ELECTRONIC COPY**

LG784655465  
Report verification at igi.org



April 3, 2026  
IGI Report Number **LG784655465**  
Description **LABORATORY GROWN DIAMOND**  
Shape and Cutting Style **CUT CORNERED  
RECTANGULAR MODIFIED  
BRILLIANT**  
Measurements **9.98 X 7.00 X 4.81 MM**  
**GRADING RESULTS**  
Carat Weight **3.14 CARATS**  
Color Grade **FANCY VIVID PINK**  
Clarity Grade **VVS 2**

April 3, 2026  
IGI Report Number **LG784655465**  
Description **LABORATORY GROWN DIAMOND**  
Shape and Cutting Style **CUT CORNERED RECTANGULAR  
MODIFIED BRILLIANT**  
Measurements **9.98 X 7.00 X 4.81 MM**

**GRADING RESULTS**

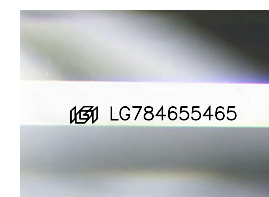
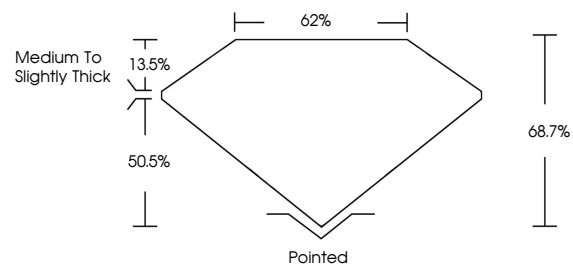
Carat Weight **3.14 CARATS**  
Color Grade **FANCY VIVID PINK**  
Clarity Grade **VVS 2**

**ADDITIONAL GRADING INFORMATION**

Polish **EXCELLENT**  
Symmetry **VERY GOOD**  
Fluorescence **STRONG**  
Inscription(s) **IGI LG784655465**

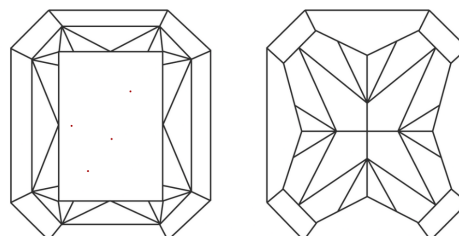
Comments: This Laboratory Grown Diamond was created by Chemical Vapor Deposition (CVD) growth process. Indications of post-growth treatment.

**PROPORTIONS**



Sample Image Used

**CLARITY CHARACTERISTICS**



**KEY TO SYMBOLS**

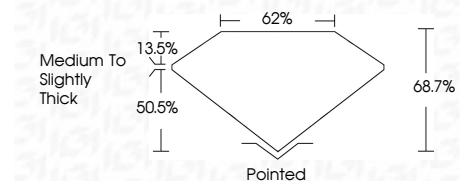
Red symbols indicate internal characteristics.  
Green symbols indicate external characteristics.

**COLOR**

D E F G H I J Faint Very Light Light

**CLARITY**

FL	IF	VVS <sup>1-2</sup>	VS <sup>1-2</sup>	SI <sup>1-2</sup>	I <sup>1-3</sup>
Flawless	Internally Flawless	Very Very Slightly Included	Very Slightly Included	Slightly Included	Included



**ADDITIONAL GRADING INFORMATION**

Polish **EXCELLENT**  
Symmetry **VERY GOOD**  
Fluorescence **STRONG**  
Inscription(s) **IGI LG784655465**  
Comments: This Laboratory Grown Diamond was created by Chemical Vapor Deposition (CVD) growth process. Indications of post-growth treatment.



April 3, 2026  
IGI Report No LG784655465  
CUT CORNERED RECT. MODIFIED BRILLIANT  
9.98 X 7.00 X 4.81 MM  
3.14 CARATS  
FANCY VIVID PINK  
VVS 2  
68.7%  
62%  
Medium to Slightly Thick  
Pointed  
EXCELLENT  
VERY GOOD  
STRONG  
IGI LG784655465  
Comments: This Laboratory Grown Diamond was created by Chemical Vapor Deposition (CVD) growth process. Indications of post-growth treatment.