



ELECTRONIC COPY

LG784654876
Report verification at igi.org



March 30, 2026
IGI Report Number **LG784654876**

Description **LABORATORY GROWN DIAMOND**

Shape and Cutting Style **CUT CORNERED
RECTANGULAR MODIFIED
BRILLIANT**

Measurements **7.81 X 5.55 X 3.64 MM**

GRADING RESULTS

Carat Weight **1.49 CARAT**

Color Grade **FANCY VIVID YELLOW**

Clarity Grade **VVS 2**

LABORATORY GROWN DIAMOND REPORT

March 30, 2026

IGI Report Number **LG784654876**

Description **LABORATORY GROWN DIAMOND**

Shape and Cutting Style **CUT CORNERED RECTANGULAR
MODIFIED BRILLIANT**

Measurements **7.81 X 5.55 X 3.64 MM**

GRADING RESULTS

Carat Weight **1.49 CARAT**

Color Grade **FANCY VIVID YELLOW**

Clarity Grade **VVS 2**

ADDITIONAL GRADING INFORMATION

Polish **EXCELLENT**

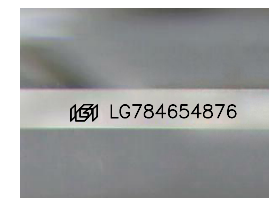
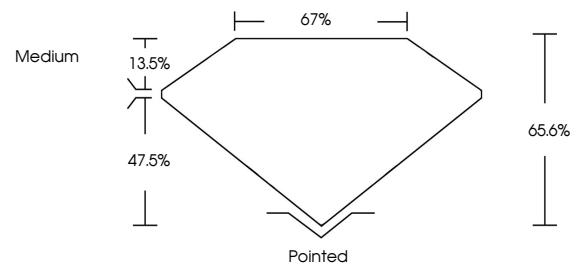
Symmetry **EXCELLENT**

Fluorescence **NONE**

Inscription(s) **IGI LG784654876**

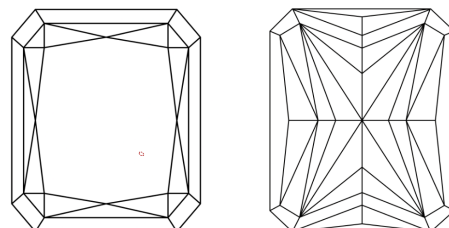
Comments: This Laboratory Grown Diamond was created by Chemical Vapor Deposition (CVD) growth process.

PROPORTIONS



Sample Image Used

CLARITY CHARACTERISTICS



KEY TO SYMBOLS

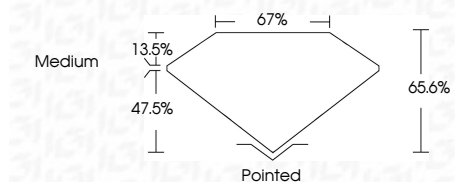
Red symbols indicate internal characteristics.
Green symbols indicate external characteristics.

COLOR

D E F G H I J Faint Very Light Light

CLARITY

FL	IF	VVS ¹⁻²	VS ¹⁻²	SI ¹⁻²	I ¹⁻³
Flawless	Internally Flawless	Very Very Slightly Included	Very Slightly Included	Slightly Included	Included



ADDITIONAL GRADING INFORMATION

Polish **EXCELLENT**

Symmetry **EXCELLENT**

Fluorescence **NONE**

Inscription(s) **IGI LG784654876**

Comments: This Laboratory Grown Diamond was created by Chemical Vapor Deposition (CVD) growth process.



IGI



March 30, 2026
IGI Report No LG784654876
CUT CORNERED RECT. MODIFIED BRILLIANT
1.49 CARAT
Carat Weight
Color Grade FANCY VIVID YELLOW
Clarity Grade VVS 2
Depth 65.6%
Table 13.5%
Girdle Medium
Culet Pointed
Polish EXCELLENT
Symmetry EXCELLENT
Fluorescence NONE
Inscription(s) IGI LG784654876
Comments: This Laboratory Grown Diamond was created by Chemical Vapor Deposition (CVD) growth process.