



ELECTRONIC COPY

LG784654365
Report verification at igi.org



March 30, 2026
IGI Report Number **LG784654365**
Description **LABORATORY GROWN DIAMOND**
Shape and Cutting Style **CUT CORNERED
RECTANGULAR MIXED CUT**
Measurements **7.81 X 5.58 X 3.68 MM**
GRADING RESULTS
Carat Weight **1.52 CARAT**
Color Grade **FANCY VIVID YELLOW**
Clarity Grade **VS 2**

March 30, 2026
IGI Report Number **LG784654365**
Description **LABORATORY GROWN DIAMOND**
Shape and Cutting Style **CUT CORNERED RECTANGULAR
MIXED CUT**
Measurements **7.81 X 5.58 X 3.68 MM**

GRADING RESULTS

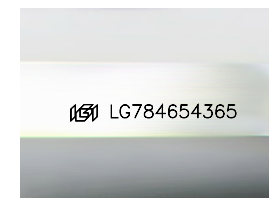
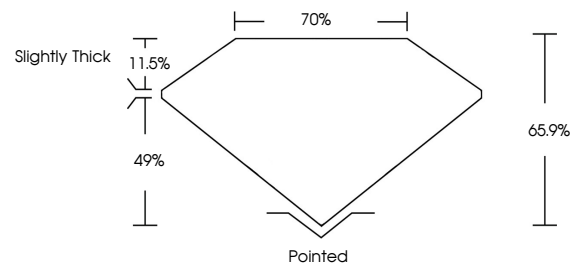
Carat Weight **1.52 CARAT**
Color Grade **FANCY VIVID YELLOW**
Clarity Grade **VS 2**

ADDITIONAL GRADING INFORMATION

Polish **EXCELLENT**
Symmetry **EXCELLENT**
Fluorescence **NONE**
Inscription(s) **IGI LG784654365**

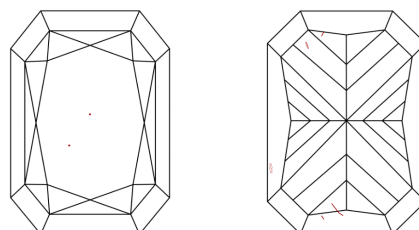
Comments: This Laboratory Grown Diamond was created by Chemical Vapor Deposition (CVD) growth process.

PROPORTIONS



Sample Image Used

CLARITY CHARACTERISTICS



KEY TO SYMBOLS

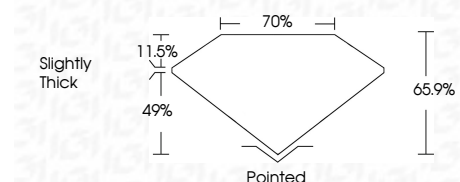
Red symbols indicate internal characteristics.
Green symbols indicate external characteristics.

COLOR

D E F G H I J Faint Very Light Light

CLARITY

FL	IF	VS ¹⁻²	VS ¹⁻²	SI ¹⁻²	I ¹⁻³
Flawless	Internally Flawless	Very Very Slightly Included	Very Slightly Included	Slightly Included	Included



ADDITIONAL GRADING INFORMATION

Polish **EXCELLENT**
Symmetry **EXCELLENT**
Fluorescence **NONE**
Inscription(s) **IGI LG784654365**
Comments: This Laboratory Grown Diamond was created by Chemical Vapor Deposition (CVD) growth process.



March 30, 2026
IGI Report No **LG784654365**
CUT CORNERED RECT. MIXED CUT
7.81 X 5.58 X 3.68 MM
Carat Weight **1.52 CARAT**
Color Grade **FANCY VIVID YELLOW**
Clarity Grade **VS 2**
Depth **65.9%**
Table **49%**
Girdle **Slightly Thick**
Culet **Pointed**
Polish **EXCELLENT**
Symmetry **EXCELLENT**
Fluorescence **NONE**
Inscription(s) **IGI LG784654365**
Comments: This Laboratory Grown Diamond was created by Chemical Vapor Deposition (CVD) growth process.