



March 19, 2026

IGI Report Number **LG784651654**

**PEAR BRILLIANT**

**LABORATORY GROWN DIAMOND**

**8.27 X 5.06 X 2.95 MM**

Carat Weight **0.71 CARAT**

Color Grade **D**

Clarity Grade **VS 2**

Polish **EXCELLENT**

Symmetry **EXCELLENT**

Fluorescence **NONE**

Inscription(s) **IGI LG784651654**

Comments: This Laboratory Grown Diamond was created by Chemical Vapor Deposition (CVD) growth process. Type IIa

**LABORATORY GROWN DIAMOND REPORT**

March 19, 2026

IGI Report Number

**LG784651654**

Description

**LABORATORY GROWN DIAMOND**

Shape and Cutting Style

**PEAR BRILLIANT**

Measurements

**8.27 X 5.06 X 2.95 MM**

**GRADING RESULTS**

Carat Weight

**0.71 CARAT**

Color Grade

**D**

Clarity Grade

**VS 2**

**ADDITIONAL GRADING INFORMATION**

Polish

**EXCELLENT**

Symmetry

**EXCELLENT**

Fluorescence

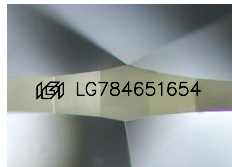
**NONE**

Inscription(s)

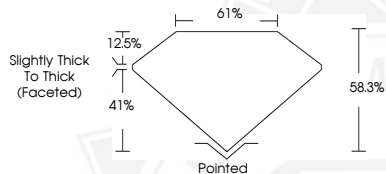
**IGI LG784651654**

Comments: This Laboratory Grown Diamond was created by Chemical Vapor Deposition (CVD) growth process.

Type IIa



Sample Image Used



March 19, 2026

IGI Report Number **LG784651654**

**PEAR BRILLIANT**

**LABORATORY GROWN DIAMOND**

**8.27 X 5.06 X 2.95 MM**

Carat Weight **0.71 CARAT**

Color Grade **D**

Clarity Grade **VS 2**

Polish **EXCELLENT**

Symmetry **EXCELLENT**

Fluorescence **NONE**

Inscription(s) **IGI LG784651654**

Comments: This Laboratory Grown Diamond was created by Chemical Vapor Deposition (CVD) growth process. Type IIa



THIS DOCUMENT WAS PRODUCED WITH THE FOLLOWING SECURITY MEASURES: SPECIAL DOCUMENT PAPER, INK SCREENS, WATERMARK, BACKGROUND DESIGNS, HOLOGRAM AND OTHER SECURITY FEATURES NOT LISTED AND DO EXCEED DOCUMENT SECURITY INDUSTRY GUIDELINES.