



ELECTRONIC COPY

LABORATORY GROWN DIAMOND REPORT

March 26, 2026
IGI Report Number LG784651195
Description LABORATORY GROWN DIAMOND
Shape and Cutting Style CUT CORNERED RECTANGULAR MIXED CUT
Measurements 12.28 X 8.98 X 6.02 MM

GRADING RESULTS

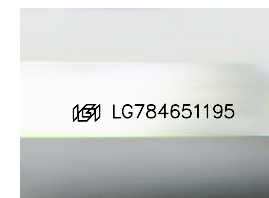
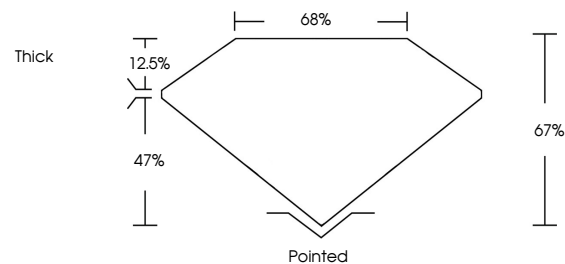
Carat Weight 6.57 CARATS
Color Grade FANCY INTENSE YELLOW
Clarity Grade VS 1

ADDITIONAL GRADING INFORMATION

Polish EXCELLENT
Symmetry EXCELLENT
Fluorescence NONE
Inscription(s) LG784651195

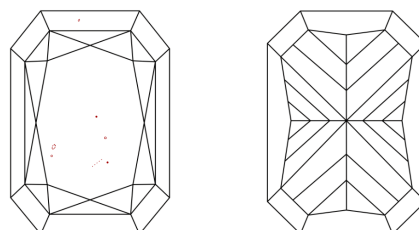
Comments: This Laboratory Grown Diamond was created by Chemical Vapor Deposition (CVD) growth process.

PROPORTIONS



Sample Image Used

CLARITY CHARACTERISTICS



KEY TO SYMBOLS

Red symbols indicate internal characteristics.
Green symbols indicate external characteristics.

COLOR

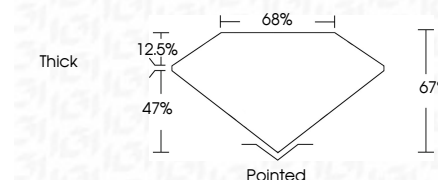
D E F G H I J Faint Very Light Light

CLARITY

FL IF VS¹⁻² VS¹⁻² SI¹⁻² I¹⁻³
Flawless Internally Flawless Very Very Slightly Included Very Slightly Included Slightly Included Included



March 26, 2026
IGI Report Number LG784651195
Description LABORATORY GROWN DIAMOND
Shape and Cutting Style CUT CORNERED RECTANGULAR MIXED CUT
Measurements 12.28 X 8.98 X 6.02 MM
GRADING RESULTS
Carat Weight 6.57 CARATS
Color Grade FANCY INTENSE YELLOW
Clarity Grade VS 1



ADDITIONAL GRADING INFORMATION

Polish EXCELLENT
Symmetry EXCELLENT
Fluorescence NONE
Inscription(s) LG784651195
Comments: This Laboratory Grown Diamond was created by Chemical Vapor Deposition (CVD) growth process.



March 26, 2026
IGI Report No LG784651195
CUT CORNERED RECT. MIXED CUT
12.28 X 8.98 X 6.02 MM
6.57 CARATS
FANCY INTENSE YELLOW
VS 1
67%
68%
Thick
Pointed
EXCELLENT
EXCELLENT
NONE
None
 LG784651195
Comments: This Laboratory Grown Diamond was created by Chemical Vapor Deposition (CVD) growth process.