



March 21, 2026

IGI Report Number **LG784651187**

**EMERALD CUT
LABORATORY GROWN DIAMOND
6.02 X 4.25 X 2.97 MM**

Carat Weight	0.76 CARAT
Color Grade	D
Clarity Grade	VVS 2
Polish	VERY GOOD
Symmetry	VERY GOOD
Fluorescence	NONE
Inscription(s)	IGI LG784651187

Comments: This Laboratory Grown Diamond was created by Chemical Vapor Deposition (CVD) growth process. Type IIa

LABORATORY GROWN DIAMOND REPORT

March 21, 2026
IGI Report Number **LG784651187**
Description **LABORATORY GROWN DIAMOND**
Shape and Cutting Style **EMERALD CUT**
Measurements **6.02 X 4.25 X 2.97 MM**

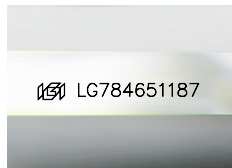
GRADING RESULTS

Carat Weight **0.76 CARAT**
Color Grade **D**
Clarity Grade **VVS 2**

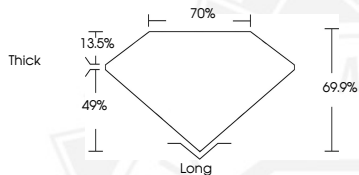
ADDITIONAL GRADING INFORMATION

Polish **VERY GOOD**
Symmetry **VERY GOOD**
Fluorescence **NONE**
Inscription(s) **IGI LG784651187**

Comments: This Laboratory Grown Diamond was created by Chemical Vapor Deposition (CVD) growth process. Type IIa



Sample Image Used



March 21, 2026

IGI Report Number **LG784651187**

**EMERALD CUT
LABORATORY GROWN DIAMOND
6.02 X 4.25 X 2.97 MM**

Carat Weight	0.76 CARAT
Color Grade	D
Clarity Grade	VVS 2
Polish	VERY GOOD
Symmetry	VERY GOOD
Fluorescence	NONE
Inscription(s)	IGI LG784651187

Comments: This Laboratory Grown Diamond was created by Chemical Vapor Deposition (CVD) growth process. Type IIa



THIS DOCUMENT WAS PRODUCED WITH THE FOLLOWING SECURITY MEASURES: SPECIAL DOCUMENT PAPER, INK SCREENS, WATERMARK, BACKGROUND DESIGNS, HOLOGRAM AND OTHER SECURITY FEATURES NOT LISTED AND DO EXCEED DOCUMENT SECURITY INDUSTRY GUIDELINES.