



**ELECTRONIC COPY**

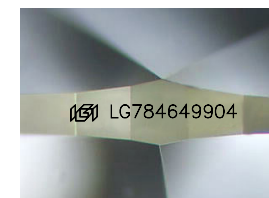
LG784649904  
Report verification at igi.org



March 23, 2026  
IGI Report Number **LG784649904**  
Description **LABORATORY GROWN DIAMOND**  
Shape and Cutting Style **MARQUISE BRILLIANT**  
Measurements **10.58 X 5.31 X 3.34 MM**

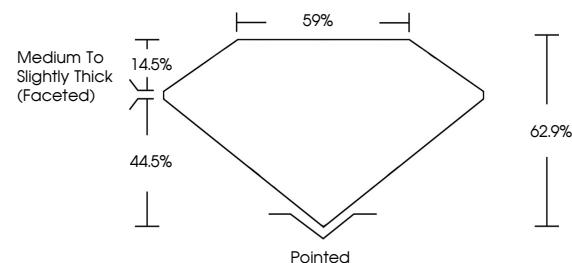
**GRADING RESULTS**

Carat Weight **1.05 CARAT**  
Color Grade **F**  
Clarity Grade **VS 1**

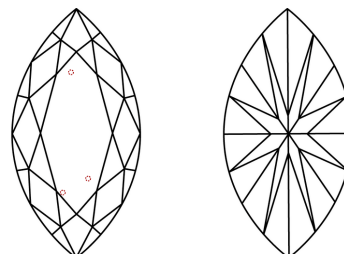


Sample Image Used

**PROPORTIONS**

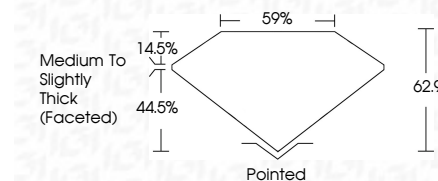


**CLARITY CHARACTERISTICS**



**KEY TO SYMBOLS**

Red symbols indicate internal characteristics.  
Green symbols indicate external characteristics.



**ADDITIONAL GRADING INFORMATION**

Polish **EXCELLENT**  
Symmetry **EXCELLENT**  
Fluorescence **NONE**  
Inscription(s) **IGI LG784649904**  
Comments: This Laboratory Grown Diamond was created by Chemical Vapor Deposition (CVD) growth process. Type IIa

**COLOR**

D E F G H I J Faint Very Light Light

**CLARITY**

FL	IF	VS <sup>1-2</sup>	VS <sup>1-2</sup>	SI <sup>1-2</sup>	I <sup>1-3</sup>
Flawless	Internally Flawless	Very Very Slightly Included	Very Slightly Included	Slightly Included	Included



**IGI**



March 23, 2026  
IGI Report No **LG784649904**  
**MARQUISE BRILLIANT**  
**10.58 X 5.31 X 3.34 MM**  
Carat Weight **1.05 CARAT**  
Color Grade **F**  
Clarity Grade **VS 1**  
Depth **62.9%**  
Table **59%**  
Girdle **Medium to Slightly Thick (Faceted)**  
Culet **Pointed**  
Polish **EXCELLENT**  
Symmetry **EXCELLENT**  
Fluorescence **NONE**  
Inscription(s) **IGI LG784649904**  
Comments: This Laboratory Grown Diamond was created by Chemical Vapor Deposition (CVD) growth process. Type IIa