



ELECTRONIC COPY

LG784649025
Report verification at igi.org



March 27, 2026
IGI Report Number **LG784649025**
Description **LABORATORY GROWN DIAMOND**
Shape and Cutting Style **OVAL BRILLIANT**
Measurements **9.69 X 5.44 X 3.16 MM**
GRADING RESULTS
Carat Weight **1.12 CARAT**
Color Grade **FANCY VIVID PINK**
Clarity Grade **VS 1**

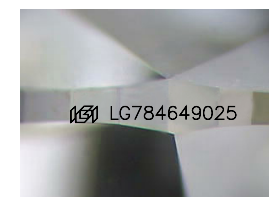
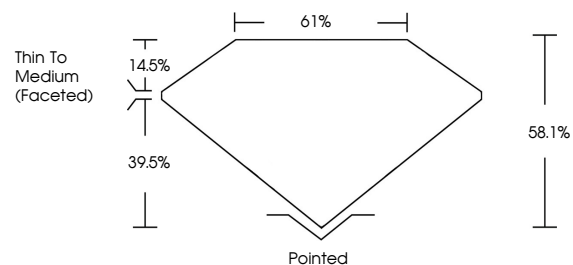
March 27, 2026
IGI Report Number **LG784649025**
Description **LABORATORY GROWN DIAMOND**
Shape and Cutting Style **OVAL BRILLIANT**
Measurements **9.69 X 5.44 X 3.16 MM**
GRADING RESULTS
Carat Weight **1.12 CARAT**
Color Grade **FANCY VIVID PINK**
Clarity Grade **VS 1**

ADDITIONAL GRADING INFORMATION

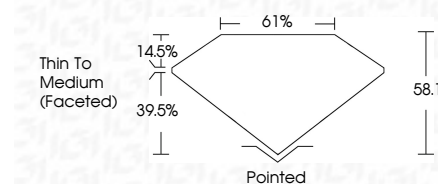
Polish **VERY GOOD**
Symmetry **VERY GOOD**
Fluorescence **SLIGHT**
Inscription(s) **IGI LG784649025**

Comments: This Laboratory Grown Diamond was created by Chemical Vapor Deposition (CVD) growth process.
Indications of post-growth treatment.

PROPORTIONS



Sample Image Used



COLOR

D E F G H I J Faint Very Light Light

CLARITY

| FL | IF | VS ¹⁻² | VS ¹⁻² | SI ¹⁻² | I ¹⁻³ |
|----------|---------------------|-----------------------------|------------------------|-------------------|------------------|
| Flawless | Internally Flawless | Very Very Slightly Included | Very Slightly Included | Slightly Included | Included |

ADDITIONAL GRADING INFORMATION

Polish **VERY GOOD**
Symmetry **VERY GOOD**
Fluorescence **SLIGHT**
Inscription(s) **IGI LG784649025**
Comments: This Laboratory Grown Diamond was created by Chemical Vapor Deposition (CVD) growth process.
Indications of post-growth treatment.



IGI



March 27, 2026
IGI Report No **LG784649025**
OVAL BRILLIANT
9.69 X 5.44 X 3.16 MM
1.12 CARAT
FANCY VIVID PINK
VS 1
58.1%
61%
Thin To Medium (Faceted)
Pointed
Polish **VERY GOOD**
Symmetry **VERY GOOD**
Fluorescence **SLIGHT**
Inscription(s) **IGI LG784649025**
Comments: This Laboratory Grown Diamond was created by Chemical Vapor Deposition (CVD) growth process.
Indications of post-growth treatment.