



ELECTRONIC COPY

LG784648814
Report verification at igi.org



March 20, 2026
IGI Report Number **LG784648814**
Description **LABORATORY GROWN DIAMOND**
Shape and Cutting Style **PEAR BRILLIANT**
Measurements **10.36 X 6.59 X 4.08 MM**

GRADING RESULTS

Carat Weight **1.59 CARAT**
Color Grade **E**
Clarity Grade **VS 2**

March 20, 2026
IGI Report Number **LG784648814**
Description **LABORATORY GROWN DIAMOND**
Shape and Cutting Style **PEAR BRILLIANT**
Measurements **10.36 X 6.59 X 4.08 MM**

GRADING RESULTS

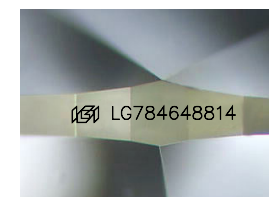
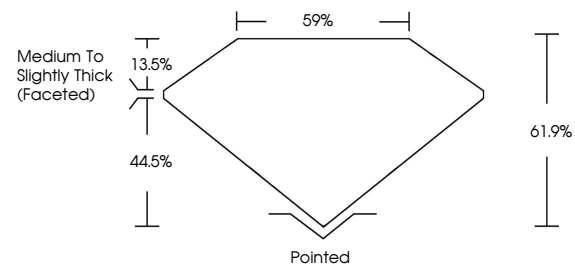
Carat Weight **1.59 CARAT**
Color Grade **E**
Clarity Grade **VS 2**

ADDITIONAL GRADING INFORMATION

Polish **EXCELLENT**
Symmetry **EXCELLENT**
Fluorescence **NONE**
Inscription(s) **IGI LG784648814**

Comments: This Laboratory Grown Diamond was created by Chemical Vapor Deposition (CVD) growth process.
Type IIa

PROPORTIONS



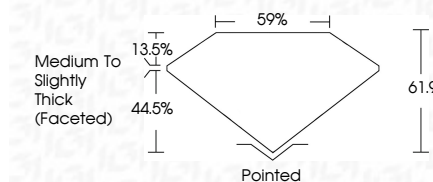
Sample Image Used

COLOR

D E F G H I J Faint Very Light Light

CLARITY

FL	IF	VS ¹⁻²	VS ¹⁻²	SI ¹⁻²	I ¹⁻³
Flawless	Internally Flawless	Very Very Slightly Included	Very Slightly Included	Slightly Included	Included



ADDITIONAL GRADING INFORMATION

Polish **EXCELLENT**
Symmetry **EXCELLENT**
Fluorescence **NONE**
Inscription(s) **IGI LG784648814**
Comments: This Laboratory Grown Diamond was created by Chemical Vapor Deposition (CVD) growth process.
Type IIa



IGI



March 20, 2026
IGI Report No **LG784648814**
PEAR BRILLIANT
10.36 X 6.59 X 4.08 MM
Carat Weight **1.59 CARAT**
Color Grade **E**
Clarity Grade **VS 2**
Table **61.9%**
Girdle **61%**
Medium to Slightly Thick (Faceted)
Culet **Pointed**
Polish **EXCELLENT**
Symmetry **EXCELLENT**
Fluorescence **NONE**
Inscription(s) **IGI LG784648814**
Comments: This Laboratory Grown Diamond was created by Chemical Vapor Deposition (CVD) growth process.
Type IIa