



ELECTRONIC COPY

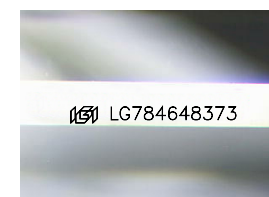
LG784648373
Report verification at igi.org



March 25, 2026
IGI Report Number **LG784648373**
Description **LABORATORY GROWN DIAMOND**
Shape and Cutting Style **STAR MODIFIED BRILLIANT**
Measurements **7.13 X 7.06 X 3.95 MM**

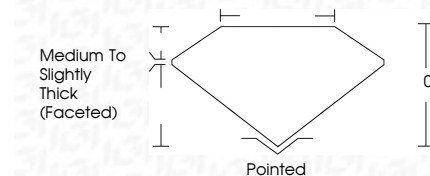
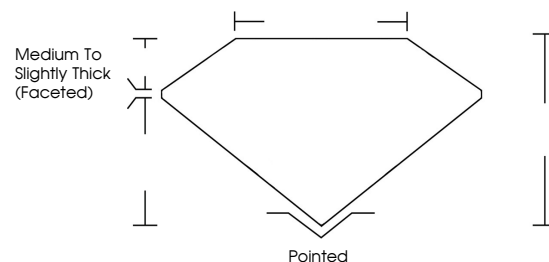
GRADING RESULTS

Carat Weight **1.10 CARAT**
Color Grade **D**
Clarity Grade **VVS 2**

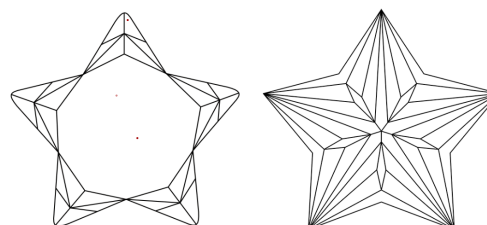


Sample Image Used

PROPORTIONS



CLARITY CHARACTERISTICS



KEY TO SYMBOLS

Red symbols indicate internal characteristics.
Green symbols indicate external characteristics.

COLOR

D E F G H I J Faint Very Light Light

CLARITY

FL	IF	VVS ¹⁻²	VS ¹⁻²	SI ¹⁻²	I ¹⁻³
Flawless	Internally Flawless	Very Very Slightly Included	Very Slightly Included	Slightly Included	Included

ADDITIONAL GRADING INFORMATION

Polish **EXCELLENT**
Symmetry **EXCELLENT**
Fluorescence **NONE**
Inscription(s) **IGI LG784648373**
Comments: This Laboratory Grown Diamond was created by Chemical Vapor Deposition (CVD) growth process.
Type IIa



March 25, 2026
IGI Report No **LG784648373**
STAR MODIFIED BRILLIANT
7.13 X 7.06 X 3.95 MM
1.10 CARAT
D
Color Grade
VS 2
Clarity Grade
Medium to Slightly Thick (Faceted)
0%
0%
Pointed
EXCELLENT
EXCELLENT
NONE
IGI LG784648373
Comments: This Laboratory Grown Diamond was created by Chemical Vapor Deposition (CVD) growth process.
Type IIa