



May 20, 2026

**IGI Report Number** LG784646811  
**ROUND BRILLIANT**  
**LABORATORY GROWN DIAMOND**  
**5.97 - 5.99 X 3.65 MM**

Carat Weight	<b>0.80 CARAT</b>
Color Grade	<b>D</b>
Clarity Grade	<b>FLAWLESS</b>
Cut Grade	<b>IDEAL</b>
Polish	<b>EXCELLENT</b>
Symmetry	<b>EXCELLENT</b>
Fluorescence	<b>NONE</b>
Inscription(s)	<b>IGI LG784646811</b>

Comments: HEARTS & ARROWS As Grown - No indication of post-growth treatment. This Laboratory Grown Diamond was created by High Pressure High Temperature (HPHT) growth process. Type II

**LABORATORY GROWN DIAMOND REPORT**

May 20, 2026  
IGI Report Number **LG784646811**  
Description **LABORATORY GROWN DIAMOND**  
Shape and Cutting Style **ROUND BRILLIANT**  
Measurements **5.97 - 5.99 X 3.65 MM**

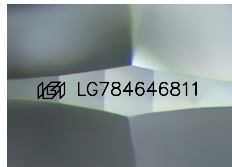
**GRADING RESULTS**

Carat Weight **0.80 CARAT**  
Color Grade **D**  
Clarity Grade **FLAWLESS**  
Cut Grade **IDEAL**

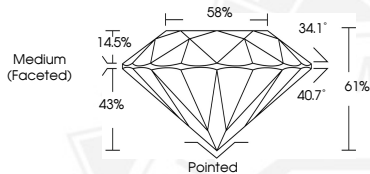
**ADDITIONAL GRADING INFORMATION**

Polish **EXCELLENT**  
Symmetry **EXCELLENT**  
Fluorescence **NONE**  
Inscription(s) **IGI LG784646811**

Comments: HEARTS & ARROWS  
As Grown - No indication of post-growth treatment.  
This Laboratory Grown Diamond was created by High Pressure High Temperature (HPHT) growth process.  
Type II



Sample Image Used



HEARTS & ARROWS



May 20, 2026

**IGI Report Number** LG784646811  
**ROUND BRILLIANT**  
**LABORATORY GROWN DIAMOND**  
**5.97 - 5.99 X 3.65 MM**

Carat Weight	<b>0.80 CARAT</b>
Color Grade	<b>D</b>
Clarity Grade	<b>FLAWLESS</b>
Cut Grade	<b>IDEAL</b>
Polish	<b>EXCELLENT</b>
Symmetry	<b>EXCELLENT</b>
Fluorescence	<b>NONE</b>
Inscription(s)	<b>IGI LG784646811</b>

Comments: HEARTS & ARROWS As Grown - No indication of post-growth treatment. This Laboratory Grown Diamond was created by High Pressure High Temperature (HPHT) growth process. Type II

THIS DOCUMENT WAS PRODUCED WITH THE FOLLOWING SECURITY MEASURES: SPECIAL DOCUMENT PAPER, INK SCREENS, WATERMARK, BACKGROUND DESIGNS, HOLOGRAM AND OTHER SECURITY FEATURES NOT LISTED AND DO EXCEED DOCUMENT SECURITY INDUSTRY GUIDELINES.