



ELECTRONIC COPY

LG784646719
Report verification at igi.org



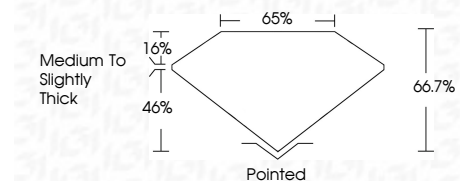
May 18, 2026
IGI Report Number LG784646719
Description LABORATORY GROWN DIAMOND

Shape and Cutting Style CUT CORNERED RECTANGULAR MODIFIED BRILLIANT

Measurements 9.14 X 6.30 X 4.20 MM

GRADING RESULTS

Carat Weight 2.14 CARATS
Color Grade D
Clarity Grade FLAWLESS



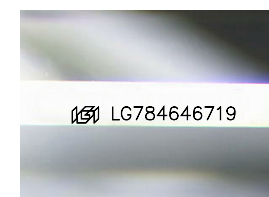
ADDITIONAL GRADING INFORMATION

Polish EXCELLENT
Symmetry EXCELLENT
Fluorescence NONE

Inscription(s) LG784646719
Comments: As Grown - No indication of post-growth treatment.
This Laboratory Grown Diamond was created by High Pressure High Temperature (HPHT) growth process. Type II

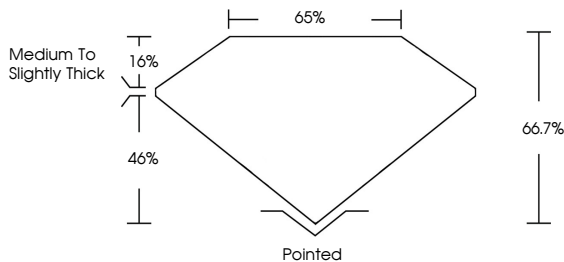


May 18, 2026
IGI Report No LG784646719
CUT CORNERED RECT. MODIFIED BRILLIANT
9.14 X 6.30 X 4.20 MM
2.14 CARATS
D
FLAWLESS
66.7%
65%
Medium to Slightly Thick
Pointed
EXCELLENT
EXCELLENT
NONE
LG784646719
Comments: As Grown - No indication of post-growth treatment. This Laboratory Grown Diamond was created by High Pressure High Temperature (HPHT) growth process. Type II

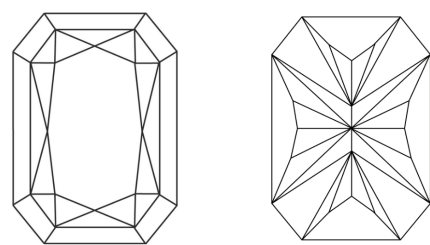


Sample Image Used

PROPORTIONS



CLARITY CHARACTERISTICS



KEY TO SYMBOLS

Red symbols indicate internal characteristics.
Green symbols indicate external characteristics.

COLOR

D E F G H I J Faint Very Light Light

CLARITY

FL IF VS 1-2 VS 1-2 SI 1-2 I 1-3
Flawless Internally Flawless Very Very Slightly Included Very Slightly Included Slightly Included Included

