



**INTERNATIONAL
GEMOLOGICAL
INSTITUTE**

LABORATORY GROWN DIAMOND REPORT

May 18, 2026
 IGI Report Number **LG784646575**
 Description **LABORATORY GROWN DIAMOND**
 Shape and Cutting Style **ROUND BRILLIANT**
 Measurements **5.13 - 5.18 X 3.17 MM**

GRADING RESULTS

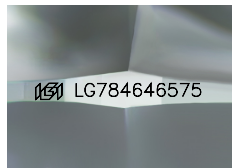
Carat Weight **0.51 CARAT**
 Color Grade **D**
 Clarity Grade **FLAWLESS**
 Cut Grade **IDEAL**

ADDITIONAL GRADING INFORMATION

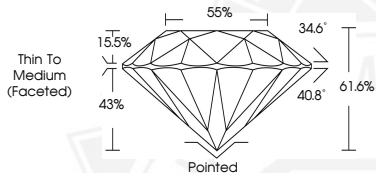
Polish **EXCELLENT**
 Symmetry **EXCELLENT**
 Fluorescence **NONE**
 Inscription(s) **IGI LG784646575**

Comments: HEARTS & ARROWS
 As Grown - No indication of post-growth treatment.
 This Laboratory Grown Diamond was created by High Pressure High
 Temperature (HPHT) growth process.
 Type II

ELECTRONIC COPY



Sample Image Used



May 18, 2026

IGI Report Number LG784646575
ROUND BRILLIANT
LABORATORY GROWN DIAMOND
5.13 - 5.18 X 3.17 MM
 Carat Weight **0.51 CARAT**
 Color Grade **D**
 Clarity Grade **FLAWLESS**
 Cut Grade **IDEAL**
 Polish **EXCELLENT**
 Symmetry **EXCELLENT**
 Fluorescence **NONE**
 Inscription(s) **IGI LG784646575**

Comments: HEARTS & ARROWS AS Grown - No indication of post-growth treatment. This Laboratory Grown Diamond was created by High Pressure High Temperature (HPHT) growth process. Type II



May 18, 2026

IGI Report Number LG784646575
ROUND BRILLIANT
LABORATORY GROWN DIAMOND
5.13 - 5.18 X 3.17 MM
 Carat Weight **0.51 CARAT**
 Color Grade **D**
 Clarity Grade **FLAWLESS**
 Cut Grade **IDEAL**
 Polish **EXCELLENT**
 Symmetry **EXCELLENT**
 Fluorescence **NONE**
 Inscription(s) **IGI LG784646575**

Comments: HEARTS & ARROWS AS Grown - No indication of post-growth treatment. This Laboratory Grown Diamond was created by High Pressure High Temperature (HPHT) growth process. Type II



HEARTS & ARROWS



THIS DOCUMENT WAS PRODUCED WITH THE FOLLOWING SECURITY MEASURES: SPECIAL DOCUMENT PAPER, INK SCREENS, WATERMARK, BACKGROUND DESIGNS, HOLOGRAM AND OTHER SECURITY FEATURES NOT LISTED AND DO EXCEED DOCUMENT SECURITY INDUSTRY GUIDELINES.

For terms & conditions and to verify this report, please visit www.igi.org